

ROCKSHOX

Eyelet and Damper Shaft Replacement SIDLuxe, Monarch, Monarch Plus, Deluxe, Super Deluxe, Super Deluxe Coil



SERVICE MANUAL

SRAM LLC WARRANTY

THIS WARRANTY GIVES YOU SPECIFIC LEGAL RIGHTS AGAINST SRAM, LLC. YOU MAY ALSO HAVE OTHER RIGHTS THAT VARY FROM STATE TO STATE, COUNTRY, OR PROVINCE. THIS WARRANTY DOES NOT AFFECT YOUR STATUTORY RIGHTS. TO THE EXTENT THIS WARRANTY IS INCONSISTENT WITH THE LOCAL LAW, THIS WARRANTY SHALL BE DEEMED MODIFIED TO BE CONSISTENT WITH SUCH LAW. FOR A FULL UNDERSTANDING OF YOUR RIGHTS, CONSULT THE LAWS OF YOUR COUNTRY, PROVINCE, OR STATE.

EXTENT OF LIMITED WARRANTY

Except as otherwise set forth herein, SRAM warrants its bicycle components to be free from defects in materials or workmanship for a period of two (2) years after original purchase of the product.

SRAM warrants all Zipp MOTO Wheels and Rims to be free from defects in materials or workmanship for the lifetime of the product.

SRAM warrants all non-electronic Zipp branded bicycle components, Model Year 2021 or newer, to be free from defects in materials or workmanship for the lifetime of the product.

GENERAL PROVISIONS

This warranty only applies to the original owner and is not transferable. Claims under this warranty must be made through the retailer where the bicycle or the SRAM product was purchased or a SRAM authorized service location. Original proof of purchase is required. All SRAM warranty claims will be evaluated by a SRAM authorized service location whereupon acceptance of the claim the product will be repaired, replaced, or refunded at SRAM's discretion. To the extent allowed by local law claims under this warranty must be made during the warranty period and within one (1) year following the date on which any such claim arises.

NO OTHER WARRANTIES

EXCEPT AS DESCRIBED HEREIN, AND TO THE EXTENT ALLOWED BY LOCAL LAW, SRAM MAKES NO OTHER WARRANTIES, GUARANTIES, OR REPRESENTATIONS OF ANY TYPE (EXPRESS OR IMPLIED), AND ALL WARRANTIES (INCLUDING ANY IMPLIED WARRANTIES OF REASONABLE CARE, MERCHANTABILITY, OR FITNESS FOR A PARTICULAR PURPOSE) ARE HEREBY DISCLAIMED.

LIMITATIONS OF LIABILITY

EXCEPT AS DESCRIBED HEREIN, AND TO THE EXTENT PERMITTED BY LAW, IN NO EVENT SHALL SRAM OR ITS THIRD PARTY SUPPLIERS BE LIABLE FOR DIRECT, INDIRECT, SPECIAL, INCIDENTAL, OR CONSEQUENTIAL DAMAGES. SOME STATES (COUNTRIES AND PROVINCES) DO NOT ALLOW THE EXCLUSION OR LIMITATION OF INCIDENTAL DAMAGES, SO THE ABOVE LIMITATION MAY NOT APPLY TO YOU.

LIMITATIONS OF WARRANTY

This warranty does not apply to products that have been incorrectly installed, adjusted, and/or maintained according to the respective SRAM user manual. The SRAM user manuals can be found online at sram.com/service.

This warranty does not apply to damage to the product caused by a crash, impact, abuse of the product, non-compliance with manufacturer's specifications of intended usage, or any other circumstances in which the product has been subjected to forces or loads beyond its design.

This warranty does not apply when the product has been modified, including but not limited to, any attempt to open or repair any electronic and electronic related components, including the motor, controller, battery packs, wiring harnesses, switches, and chargers.

This warranty does not apply when the serial number or production code has been deliberately altered, defaced, or removed.

SRAM components are designed for use only on bicycles that are pedal powered or pedal assisted (e-Bike/Pedelec).

Notwithstanding anything else set forth herein, the battery pack and charger warranty does not include damage from power surges, use of improper charger, improper maintenance, or such other misuse.

This warranty shall not cover damages caused by the use of parts of different manufacturers or parts that are not compatible or suitable for use with SRAM components.

This warranty shall not cover damages resulting from commercial (rental) use.

WEAR AND TEAR

This warranty does not apply to normal wear and tear. Wear and tear parts are subject to damage as a result of normal use, failure to service according to SRAM recommendations, and/or riding or installation in conditions or applications other than recommended.

WEAR AND TEAR PARTS INCLUDE:

- Aero bar pads
- Air sealing o-rings
- Batteries
- Bearings
- Bottomout pads
- Brake pads
- Bushings
- Cassettes
- Chains
- Corrosion
- Disc brake rotors
- Dust seals
- Free hubs, Driver bodies, Pawls
- Foam rings, Glide rings
- Handlebar grips
- Jockey wheels
- Rear shock mounting hardware and main seals
- Rubber moving parts
- Shifter and Brake cables (inner and outer)
- Shifter grips
- Spokes
- Sprockets
- Stripped threads/bolts (aluminum, titanium, magnesium or steel)
- Tires
- Tools
- Transmission gears
- Upper tubes (stanchions)
- Wheel braking surfaces

ZIPP IMPACT REPLACEMENT POLICY

Zipp branded products, Model Year 2021 or newer, are covered under a lifetime impact-damage replacement policy. This policy can be used to obtain a replacement of a product in the event of non-warranty impact damage occurring while riding your bicycle. See www.zipp.com/support for more information.



SAFETY FIRST!

We care about YOU. Please, always wear your safety glasses and protective gloves when servicing RockShox products.

Protect yourself! Wear your safety gear!

TABLE OF CONTENTS

INTRODUCTION	5
SIDLUXE	6
PARTS, TOOLS, AND SUPPLIES	6
TORQUE VALUES	6
DISASSEMBLY - RL/SELECT+, RL/ULTIMATE, RLR/SELECT+, RLR/ULTIMATE REMOTE.....	7
ASSEMBLY - RL/SELECT+, RL/ULTIMATE, RLR/SELECT+, RLR/ULTIMATE REMOTE.....	9
TORQUE	10
MONARCH	12
PARTS, TOOLS, AND SUPPLIES	12
TORQUE VALUES	12
DISASSEMBLY - RT3, RL, RT, XX	13
ASSEMBLY - RL, RT, XX	16
ASSEMBLY - RT3.....	17
TORQUE	18
MONARCH PLUS	20
PARTS, TOOLS, AND SUPPLIES	20
TORQUE VALUES	20
DISASSEMBLY - RC3, R	21
ASSEMBLY - RC3, R	23
TORQUE	25
DELUXE	26
PARTS, TOOLS, AND SUPPLIES	26
TORQUE VALUES	26
DISASSEMBLY - R/SELECT, RL/SELECT+, RT/SELECT+, RT3, RCT/ULTIMATE, RLR/ULTIMATE REMOTE, RE:AKTIV, RE:AKTIV THRU SHAFT, NUDE RL3/NUDE RLC3	27
ASSEMBLY - RL/SELECT+, RT/SELECT+.....	31
ASSEMBLY - R/SELECT, RT3, RCT/ULTIMATE, RLR/ULTIMATE REMOTE, RE:AKTIV.....	32
ASSEMBLY - RE:AKTIV THRU SHAFT	33
ASSEMBLY - NUDE RL3/NUDE RLC3.....	34
TORQUE	35
SUPER DELUXE	37
PARTS, TOOLS, AND SUPPLIES	37
TORQUE VALUES	37
DISASSEMBLY - RT/SELECT+, RC3, RCT/ULTIMATE.....	38
ASSEMBLY - RT/SELECT+, RC3, RCT/ULTIMATE.....	41
SUPER DELUXE THRU SHAFT	45
PARTS, TOOLS, AND SUPPLIES	45
TORQUE VALUES	45
DISASSEMBLY	46
ASSEMBLY	49
SUPER DELUXE COIL	53
PARTS, TOOLS, AND SUPPLIES	53
TORQUE VALUES	53
DAMPER SHAFT/EYELET	54
EYELET/DAMPER BODY.....	54
REMOVAL - RESERVOIR - RT/SELECT+, RCT/ULTIMATE, RTR, ULTIMATE REMOTE	55
INSTALLATION - RESERVOIR - RT/SELECT+, RCT/ULTIMATE, RTR, ULTIMATE REMOTE.....	56

Introduction

The procedures in this service manual are not included in the *SIDLuxe, Monarch, Monarch Plus, Deluxe, Super Deluxe, Super Deluxe Thru Shaft, or Super Deluxe Coil Service Manuals*.

Prior to beginning eyelet and/or damper shaft replacement, follow the disassembly procedures in the appropriate rear shock service manual and continue as described in each section in this manual.

Upon completion of the procedures in this manual, continue with the appropriate rear shock service manual for shock assembly and additional service procedures.

Refer to the *RockShox Spare Parts Catalog* at www.sram.com/service for available spare part kits, lubricants, and tools.

The procedures in this section are not included in the *SIDLuxe Service Manual*.

Prior to beginning, follow the disassembly procedures in the **Piston Service** section of the *SIDLuxe Service Manual*, through air seal head/air piston removal.

Parts, Tools, and Supplies

Parts

- SIDLuxe eyelet assembly
- SIDLuxe damper shaft

Safety and Protection Supplies

- Apron
- Clean, lint-free shop towels
- Nitrile gloves
- Safety glasses

Lubricants and Fluids

- Isopropyl alcohol
- RockShox Dynamic Seal Grease
- Loctite Threadlocker Blue 242

RockShox Tools

- RockShox Vise Blocks (3-hole) - 10 mm slot

Common Tools

- Adjustable open end wrench
- Bench vise
- Crowfoot Socket: 13 mm or 54 mm
- Open end wrench: 18 mm
- Torque wrench

SAFETY INSTRUCTIONS

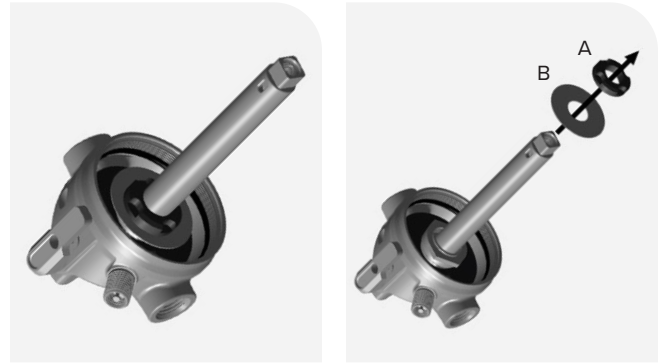
Always wear safety glasses and nitrile gloves when working with suspension oil.

Torque Values

Deluxe	Tool	Model	Torque
Eyelet (Standard) to Damper Shaft	13 mm Crowfoot	RL/Select+	4.5 N•m (40 in-lb)
Eyelet (Trunnion) to Damper Shaft	54 mm Crowfoot	RLR/Select+ Remote RL/Ultimate	
Eyelet bottom plate	18 mm Open end wrench	RLR/Ultimate Remote	Finger tight

1 Remove the (A) bottom out bumper and (B) washer. Clean and set aside.

RL trunnion pictured: Procedure is the same for all models.



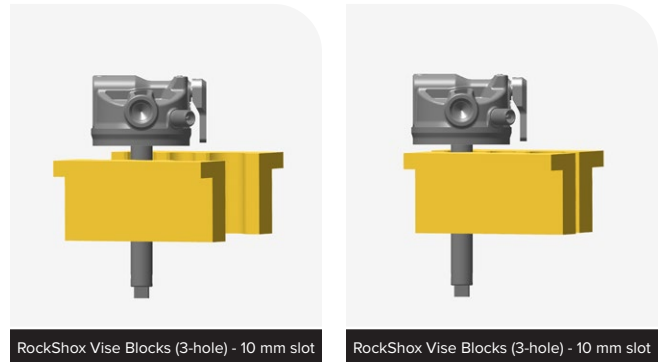
2 Remove the (A) bottom plate and (B) volume equalizer spacer (if installed). Clean and set aside.

RL trunnion pictured: Procedure is the same for all models.



3 **RL/Select+, RL/Ultimate, RLR/Select+, RLR/Ultimate Remote:** Clamp the damper shaft into a vise with RockShox Vise Blocks (3-hole) (10 mm slot), threads down, just below the eyelet.

RL/Select+, RL/Ultimate: Confirm the lever is in the open position.



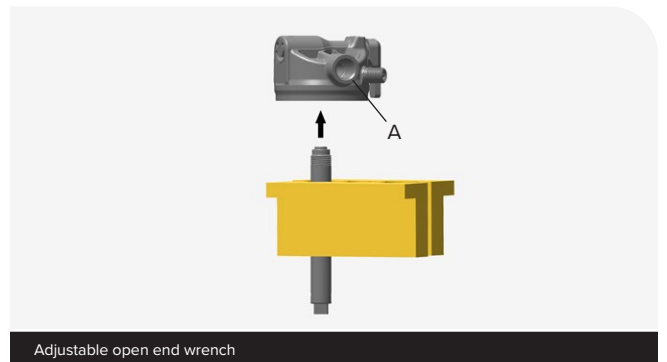
RockShox Vise Blocks (3-hole) - 10 mm slot

RockShox Vise Blocks (3-hole) - 10 mm slot

4 Secure the wrench on the (standard or trunnion) eyelet mount flats (A). Unthread and remove the eyelet assembly from the damper shaft assembly.

RL/Select+, RL/Ultimate pictured: Procedure is the same for all models.

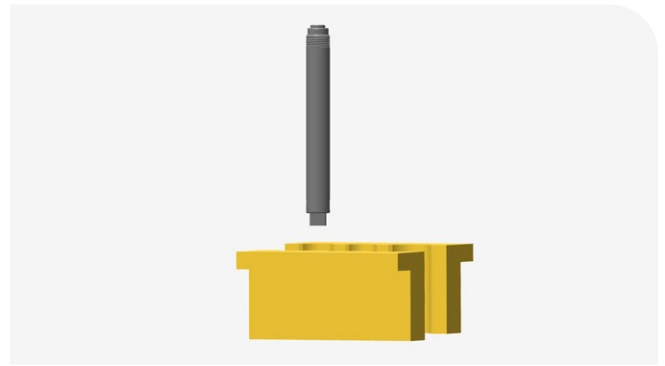
Eyelet	Wrench
Standard	13 mm
Trunnion	54 mm



Adjustable open end wrench

5 Remove the damper shaft assembly from the vise and vise blocks and set it aside.

RL/Select+, RL/Ultimate pictured: Procedure is the same for all models.



6 **If re-using eyelet assembly:** Clean the eyelet shaft threads with a towel only. Remove all threadlocker.

Do not spray alcohol or cleaner into the eyelet. Tap the eyelet on a flat surface to remove any loose bits of threadlocker as needed.

If replacing eyelet assembly: Discard the eyelet assembly.

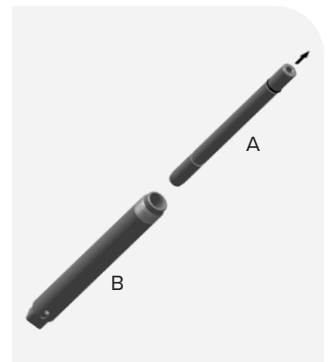
RL/Select+, RL/Ultimate trunnion pictured: Procedure is the same for all models.



7 Remove the (A) rebound poker assembly from the (B) damper shaft.

If the damper shaft will be replaced: Discard the damper shaft.

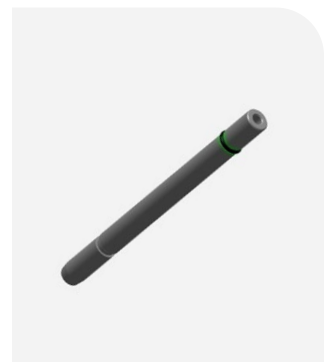
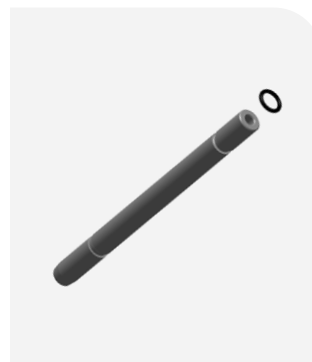
If the damper shaft will be re-used: Clean the damper shaft and damper shaft threads.



Remove the o-ring from the rebound poker.

Clean the rebound poker.

Apply grease to a new o-ring and install it onto the rebound poker.



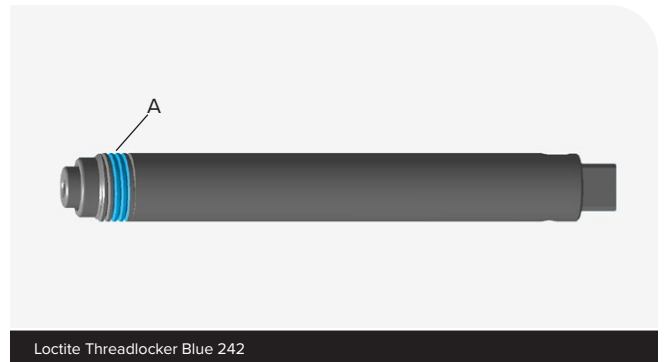
- 1 Apply grease to the rebound poker assembly (A) o-ring.



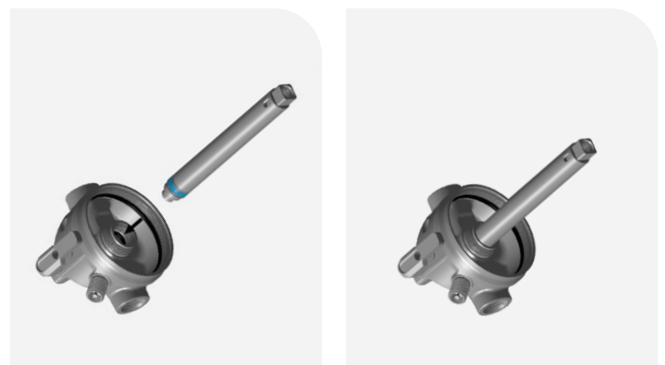
Install the (A) rebound poker assembly, tapered end first, into the eyelet/threaded end of the (B) damper shaft until it stops.



- 2 Apply Loctite Threadlocker Blue 242 to the (A) damper shaft threads (only apply to threads).



- 3 Thread the damper shaft assembly into the eyelet by hand until it stops.



Torque

- 1 Rotate the rebound adjuster (A) clockwise until it stops.

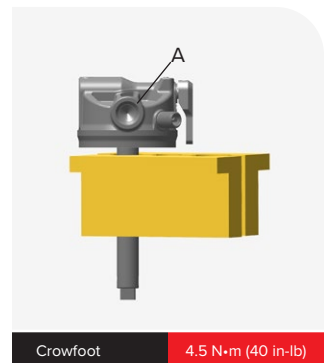
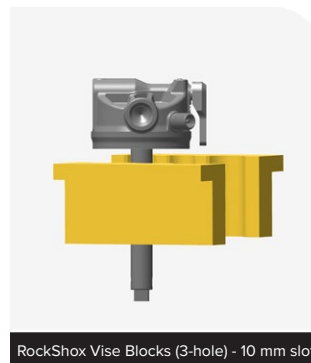


- 2 Clamp the damper shaft into a vise with RockShox Vise Blocks (3-hole) (10 mm slot), just below the eyelet.

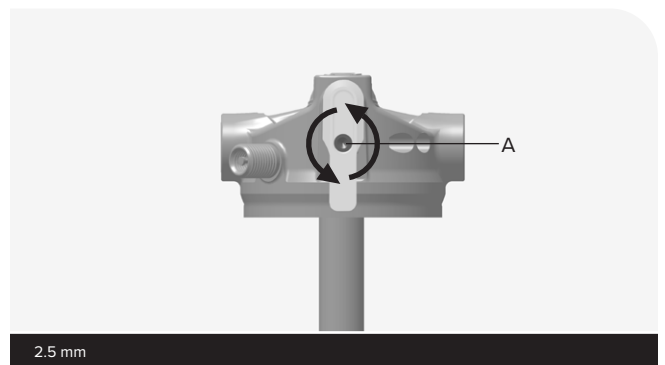
Secure the wrench on the (standard or trunnion) eyelet mount flats (A). Tighten the eyelet to the specified torque.

Remove from vise and vise blocks.

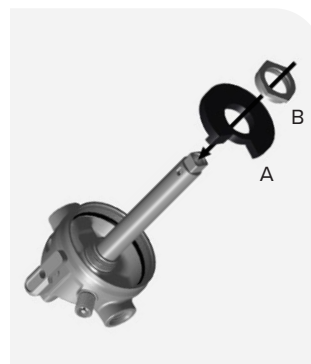
Eyelet	Crowfoot
Standard	13 mm
Trunnion	54 mm



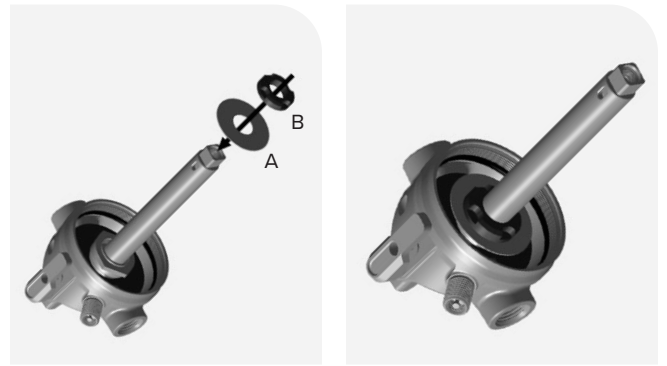
- 3 Rotate the rebound adjuster (A) counter clockwise until it stops. Confirm the rebound adjuster rotates properly full clockwise and full counter clockwise.



- 4 Install the (A) volume equalizer spacer and the (B) bottom plate. **RL trunnion pictured:** Procedure is the same for all models.



- 5** Install the (A) washer and (B) bottom out bumper.
RL trunnion pictured: Procedure is the same for all models.



Proceed with service and assembly procedures in the **Piston Service** section of the *SIDLuxe Service Manual*, after travel spacer removal.

The procedures in this section are not included in the *Monarch RT3, R Service Manual* and the *Monarch RL, RT, XX Service Manual*.

Prior to beginning, follow the disassembly procedures in the **Piston Service** section of the *Monarch RT3, R Service Manual* or *Monarch RL, RT, XX Service Manual*, through air seal head/air piston removal.

Parts, Tools, and Supplies

Parts

- Monarch RT3 damper shaft assembly kit
- Monarch RL, RT, XX damper shaft assembly kit

Safety and Protection Supplies

- Apron
- Clean, lint-free shop towels
- Nitrile gloves
- Oil pan
- Safety glasses

Lubricants and Fluids

- Isopropyl alcohol
- RockShox Dynamic Seal Grease
- Loctite Threadlocker Blue 242

RockShox Tools

- RockShox Vise Blocks (3-hole) - 10 mm slot

Common Tools

- Adjustable open end wrench
- Bench vise
- Crowfoot Socket: 13 mm
- Torque wrench

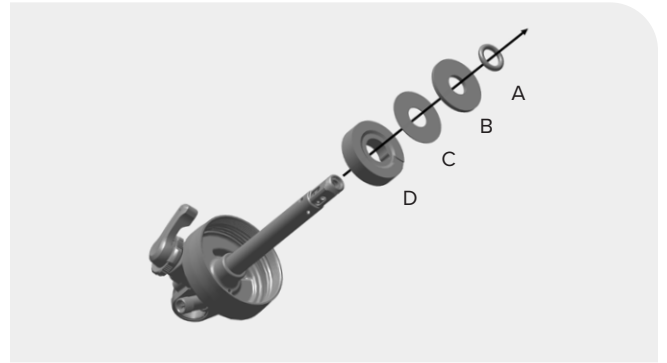
SAFETY INSTRUCTIONS

Always wear safety glasses and nitrile gloves when working with suspension oil.

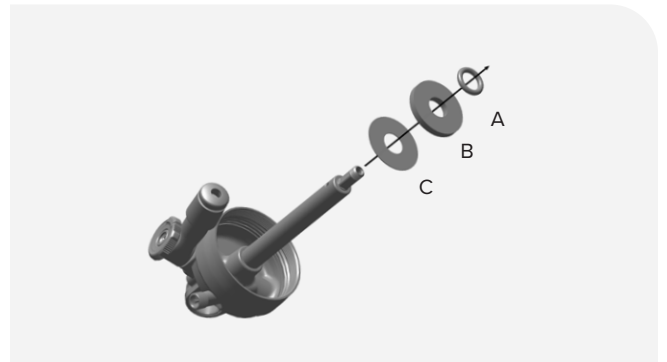
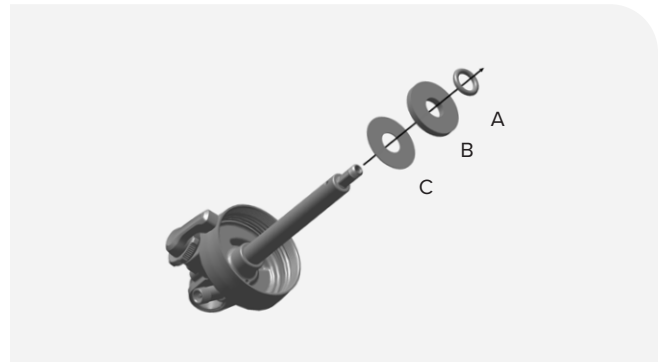
Torque Values

Deluxe	Tool	Model	Torque
Eyelet (Standard) to Damper Shaft	13 mm Crowfoot	RT3 RL, RT, XX	4.5 N•m (40 in-lb)

1 **RT3:** Remove the (A) bottom out o-ring, (B) travel washer (if installed), (C) washer, and (D) volume compensator (if installed). Clean and set aside.



RL, RT, XX: Remove the (A) bottom out o-ring, (B) travel washer (if installed), and (C) washer. Clean and set aside.



2 Clamp the damper shaft into a vise with RockShox Vise Blocks (3-hole) (10 mm slot), threads down, just below the eyelet.

RT3: Confirm the lever is in the open position.



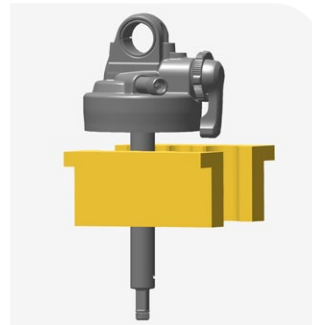
RockShox Vise Blocks (3-hole) - 10 mm slot



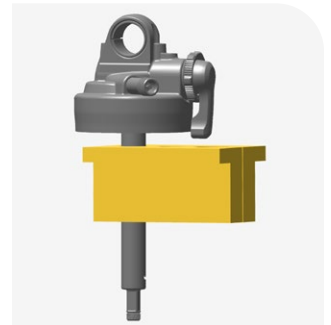
RockShox Vise Blocks (3-hole) - 10 mm slot

RL, RT: Confirm the lever is in the open position.

RL, RT pictured. Procedure is the same for XX.



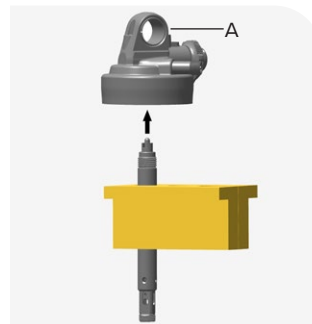
RockShox Vise Blocks (3-hole) - 10 mm slot



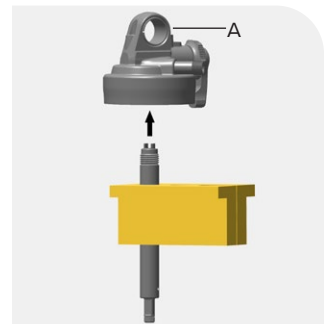
RockShox Vise Blocks (3-hole) - 10 mm slot

3 Secure the wrench on the eyelet mount flats (A). Unthread and remove the eyelet assembly from the damper shaft assembly.

RL, RT, XX: RL, RT pictured. Procedure is the same for XX.

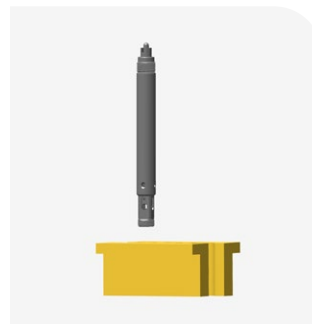


Adjustable open end wrench RT3

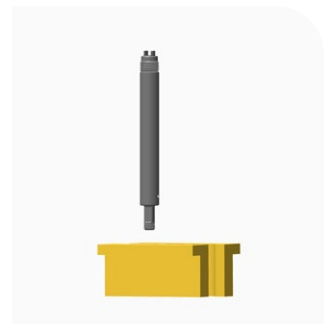


Adjustable open end wrench RL, RT, XX

4 Remove the damper shaft assembly from the vise and vise blocks and discard the damper shaft assembly.



RT3



RL, RT, XX

5 Clean the eyelet shaft threads with a towel only. Remove all threadlocker.

Do not spray alcohol or cleaner into the eyelet. Tap the eyelet on a flat surface to remove any loose bits of threadlocker as needed.

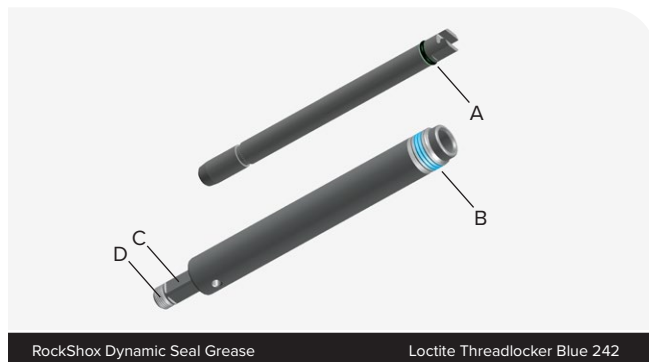
RT3 pictured: Procedure is the same for all models.



- 1 Apply grease to the adjuster rod (A) o-ring.

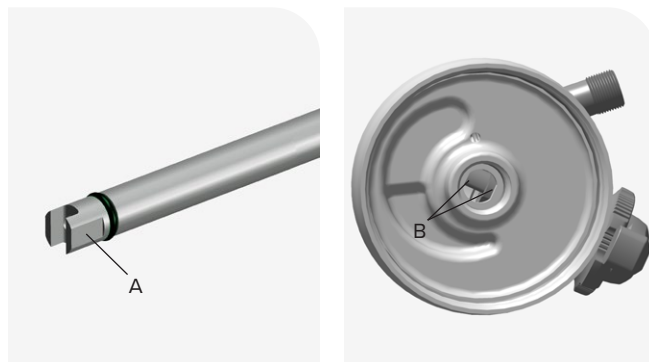
Apply Loctite Threadlocker Blue 242 to (B) 2 full threads (only apply to threads) of the damper shaft.

Do not apply Threadlocker to the (C) flat gland surface at the end of damper shaft or the (D) piston threads.



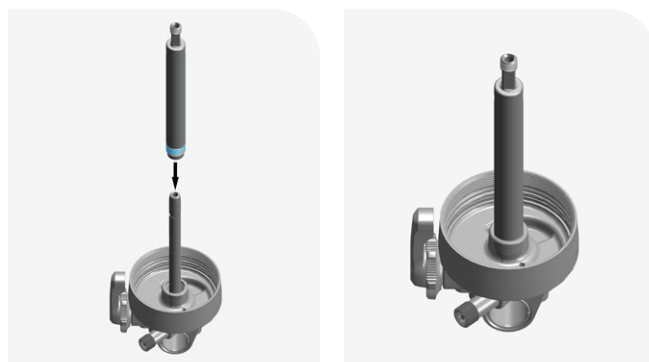
- 2 Insert the (A) keyed end of the adjuster assembly into the eyelet aligned with the (B) flats edges inside the eyelet. Confirm the adjuster does not spin inside the eyelet.

RL, RT Pictured: Procedure is the same for XX.

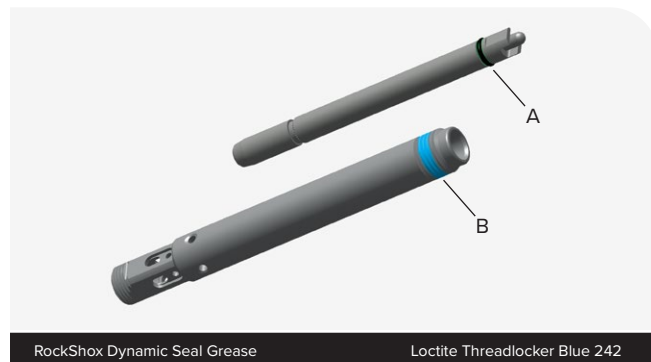


- 3 Thread the damper shaft assembly into the eyelet by hand until it stops.

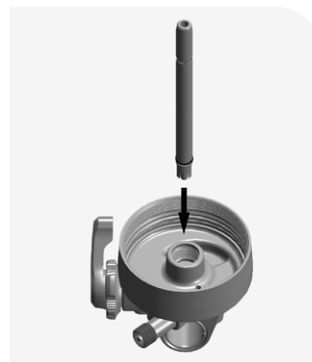
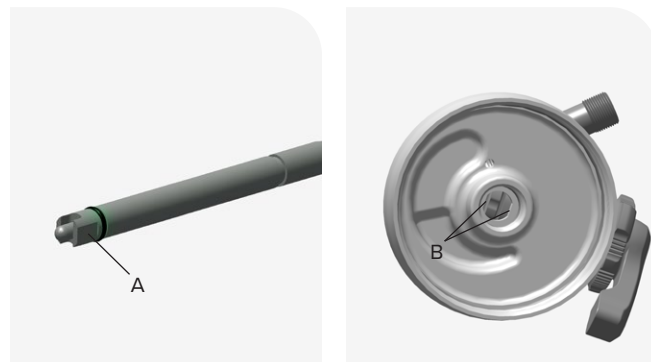
RL, RT Pictured: Procedure is the same for XX.



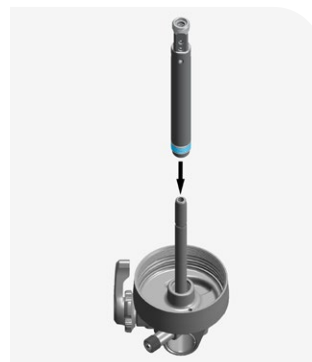
- 1** Apply grease to the adjuster rod (A) o-ring.
Apply Loctite Threadlocker Blue 242 to (B) 2 full threads (only apply to threads) of the damper shaft.



- 2** Insert the (A) keyed end of the adjuster assembly into the eyelet aligned with the (B) flats edges inside the eyelet. Confirm the adjuster does not spin inside the eyelet.



- 3** Install the damper shaft assembly over the adjuster assembly. Thread the damper shaft into the eyelet by hand until it stops.



Torque

- 1 Rotate the rebound adjuster clockwise until it stops.



- 2 Clamp the damper shaft into a vise with RockShox Vise Blocks (3-hole) (10 mm slot), just below the eyelet.

Secure the wrench on the eyelet mount flats (A). Tighten the eyelet to the specified torque.

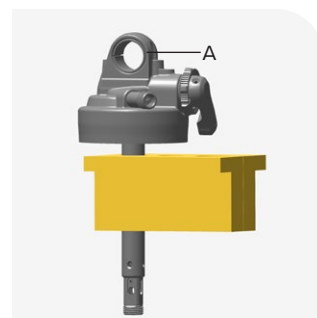
Remove from vise and vise blocks.

Model	Torque
RT3	4.5 N•m (40 in-lb)
RL, RT, XX	

RT3 Pictured: Procedure is the same for RL, RT, XX.



RockShox Vise Blocks (3-hole) - 10 mm slot

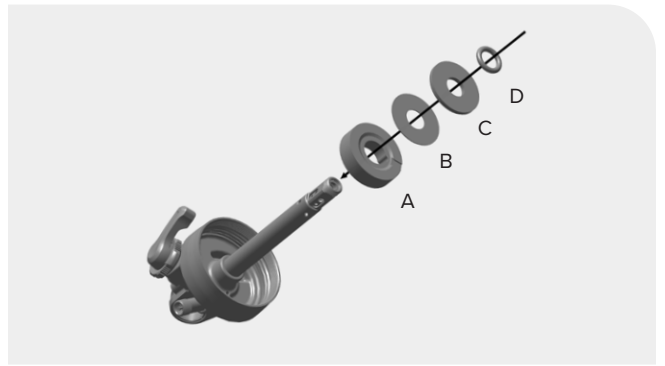


13 mm Crowfoot Torque - See Table

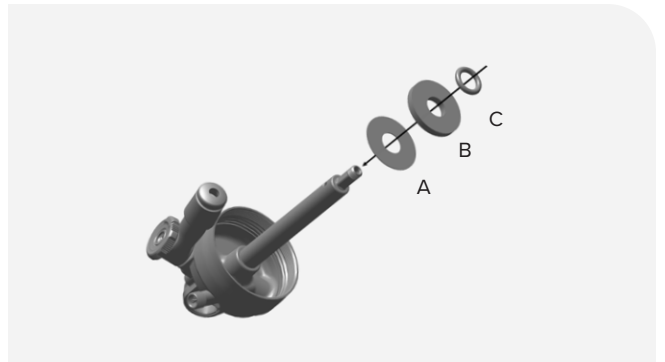
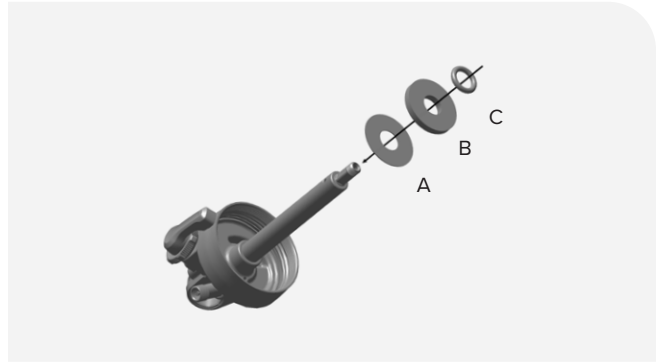
- 3 Rotate the rebound adjuster counter clockwise until it stops.
Confirm the rebound adjuster rotates properly full clockwise and full counter clockwise.



4 **RT3:** Install the (A) volume compensator (if included), (B) washer, (C) travel washer (if installed), and the (D) bottom out o-ring



RL, RT, XX: Install the (A) washer, (B) travel washer (if installed), and (C) bottom out o-ring.



Proceed with service and assembly procedures in the **Piston Service** section of the appropriate *Monarch Service Manual* (**Monarch RT3, R or Monarch RL, RT, XX**), after air seal head/air piston removal.

The procedures in this section are not included in the *Monarch Plus RC3, R Service Manual*.

Prior to beginning, follow the disassembly procedures in the **Piston Service** section of the *Monarch Plus RC3, R Service Manual* through air seal head/air piston removal.

Parts, Tools, and Supplies

Parts

- Monarch Plus RC3, R damper shaft kit

Safety and Protection Supplies

- Apron
- Clean, lint-free shop towels
- Nitrile gloves
- Oil pan
- Safety glasses

Lubricants and Fluids

- Isopropyl alcohol
- RockShox Dynamic Seal Grease
- Loctite Threadlocker Blue 242

RockShox Tools

- RockShox Vise Blocks (3-hole) - 10 mm slot

Common Tools

- Adjustable open end wrench
- Bench vise
- Crowfoot Socket: 13 mm
- Torque wrench

SAFETY INSTRUCTIONS

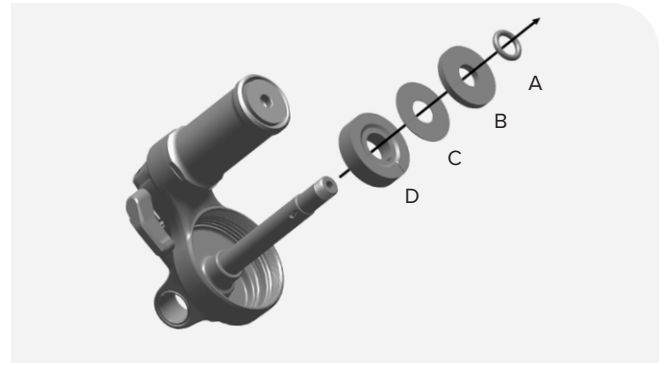
Always wear safety glasses and nitrile gloves when working with suspension oil.

Torque Values

Deluxe	Tool	Model	Torque
Eyelet (Standard) to Damper Shaft	13 mm Crowfoot	RC3 R	4.5 N•m (40 in-lb)

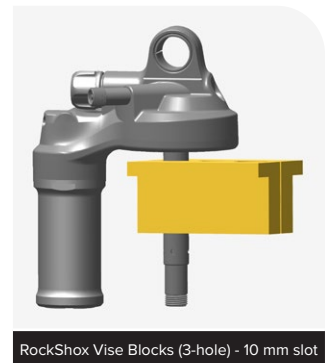
RC3 Pictured: Procedure is the same for R.

- 1 RC3:** Remove the (A) bottom out o-ring, (B) travel washer (if installed), (C) washer, and (D) volume compensator (if installed). Clean and set aside.



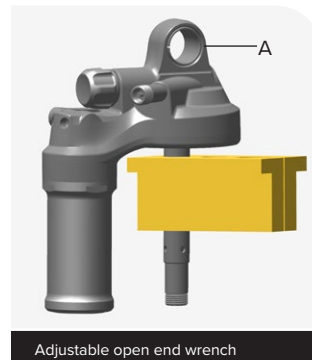
- 2** Clamp the damper shaft into a vise with RockShox Vise Blocks (3-hole) (10 mm slot), threads down, just below the eyelet.

RC3: Confirm the lever is in the open position.



- 3** Secure the wrench on the eyelet mount flats (A). Unthread and loosen the eyelet assembly from the damper shaft assembly.

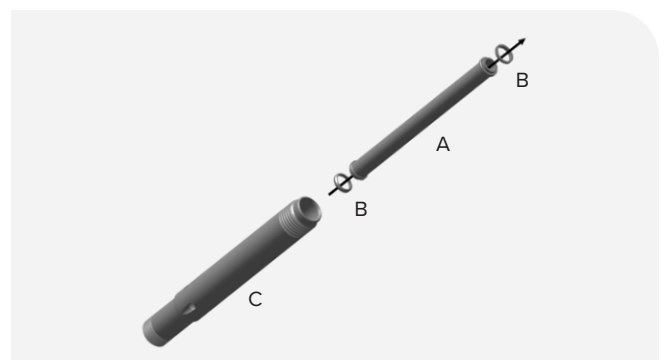
Remove the assembly from the vise and unthread the damper shaft assembly from the eyelet assembly.



- 4** Remove the (A) compression tube and (B) crush washers from the (C) damper shaft.

Discard the damper shaft and crush washers.

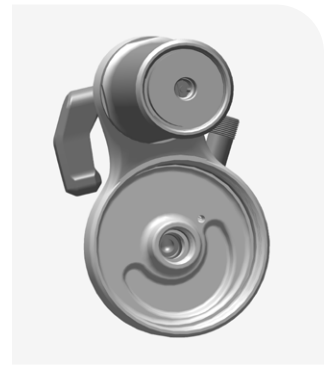
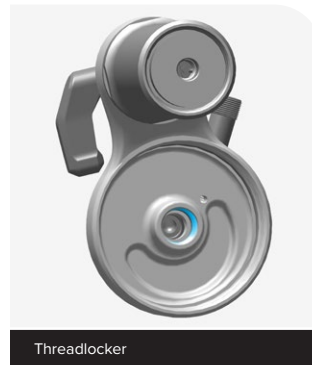
Clean the compression tube.



5 Clean the eyelet shaft threads with a towel only. Remove all threadlocker.

Do not spray alcohol or cleaner into the eyelet. Tap the eyelet on a flat surface to remove any loose bits of threadlocker as needed.

RC3 pictured: Procedure is the same for R.



RC3 Pictured: Procedure is the same for R.

- 1 Install a new crush washer onto the each end of the compression tube.



- 2 Install the compression tube into the new damper shaft until it stops.

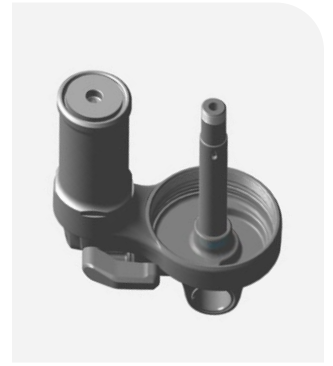


- 3 Apply Loctite Threadlocker Blue 242 to 2 full threads (only apply to threads) of the (A) eyelet end of the damper shaft.
Do not apply Threadlocker to the (B) the threads on the piston end of the damper shaft



- 4** Insert and thread the damper shaft assembly into the eyelet by hand until it stops.

RC3 Pictured: Procedure is the same for R.



Torque

RC3 Pictured: Procedure is the same for R.

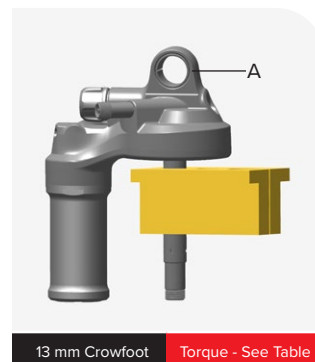
- 1 Clamp the damper shaft into a vise with RockShox Vise Blocks (3-hole) (10 mm slot), just below the eyelet.

Secure the wrench on the eyelet mount flats (A). Tighten the eyelet to the specified torque.

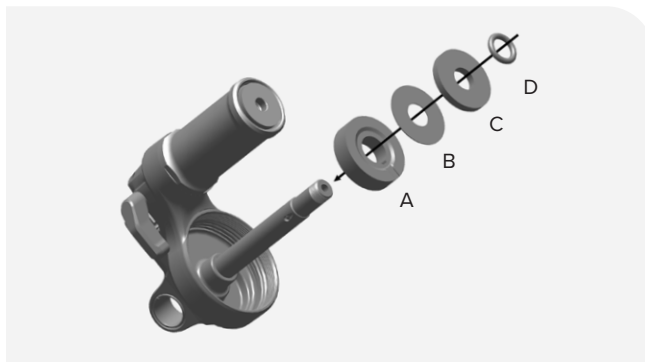
Remove from vise and vise blocks.

Model	Torque
RC3	4.5 N•m (40 in-lb)
R	

RC3 Pictured: Procedure is the same for RL, RT, XX.



- 2 Install the (A) volume compensator (if included), (B) washer, (C) travel washer (if installed), and the (D) bottom out o-ring.



Proceed with service and assembly procedures in the **Piston Service** section of the *Monarch Plus RC3, R Service Manual* after air seal head/air piston removal.

The procedures in this section are not included in the *Deluxe Service Manuals*.

Prior to beginning, follow the disassembly procedures in the **Piston Service** section of the appropriate *Deluxe Service Manual* (**Deluxe/Deluxe NUDE, Deluxe RE:aktiv, or Deluxe RE:aktiv Thru Shaft**), through air seal head/air piston removal.

Parts, Tools, and Supplies

Parts

- Deluxe eyelet assembly
- Deluxe damper shaft

Safety and Protection Supplies

- Apron
- Clean, lint-free shop towels
- Nitrile gloves
- Oil pan
- Safety glasses

Lubricants and Fluids

- Isopropyl alcohol
- RockShox Dynamic Seal Grease
- Loctite Threadlocker Blue 242

RockShox Tools

- RockShox Vise Blocks (3-hole) - 10 mm slot

Common Tools

- Adjustable open end wrench
- Bench vise
- Crowfoot Socket: 13 mm, 29 mm, or 54 mm
- Torque wrench

SAFETY INSTRUCTIONS

Always wear safety glasses and nitrile gloves when working with suspension oil.

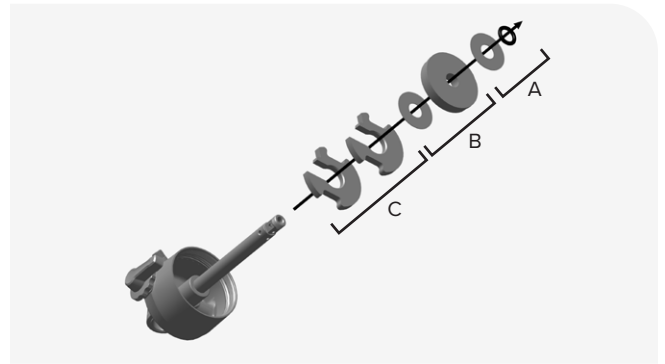
Torque Values

Deluxe	Tool	Model	Torque
Eyelet (Standard) to Damper Shaft	13 mm Crowfoot	R/Select	4.5 N•m (40 in-lb)
		RL/Select+, RT/Select+	4.5 N•m (40 in-lb)
		RT3	4.5 N•m (40 in-lb)
Eyelet (Bearing) to Damper Shaft	29 mm Crowfoot	RCT/Ultimate	7.9 N•m (70 in-lb)
		RLR/Ultimate Remote	4.5 N•m (40 in-lb)
		RE:aktiv (Trek)	4.5 N•m (40 in-lb)
Eyelet (Trunnion) to Damper Shaft	54 mm Crowfoot	RE:aktiv Thru Shaft (Trek)	4.5 N•m (40 in-lb)
		NUDE RL3/NUDE RLC3 (SCOTT)	4.5 N•m (40 in-lb)

Disassembly - R/Select, RL/Select+, RT/Select+, RT3, RCT/Ultimate, RLR/Ultimate Remote, RE:aktiv, RE:aktiv Thru Shaft, NUDE RL3/NUDE RLC3

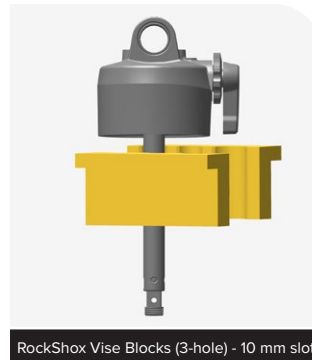
- 1** Remove the (A) bottom out o-ring and washer, (B) travel reducer and washer (if installed), and (C) volume spacers (if installed). Clean and set aside.

RL/Select+, RT/Select+ pictured: Procedure is the same for all models.



- 2** R/Select, RL/Select+, RT/Select+, RT3, RCT/Ultimate, RLR/Ultimate Remote, NUDE RL3/NUDE RLC3, RE:aktiv, RE:aktiv Thru Shaft: Clamp the damper shaft into a vise with RockShox Vise Blocks (3-hole) (10 mm slot), threads down, just below the eyelet.

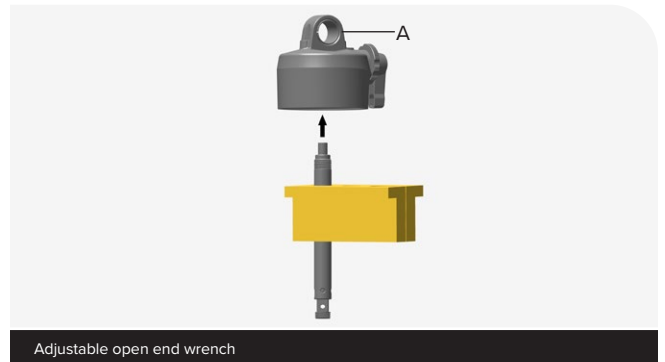
RL/Select+, RT/Select+, RT3, RCT/Ultimate: Confirm the lever is in the open position.



- 3** Secure the wrench on the (standard, trunnion, or bearing) eyelet mount flats (A). Unthread and remove the eyelet assembly from the damper shaft assembly.

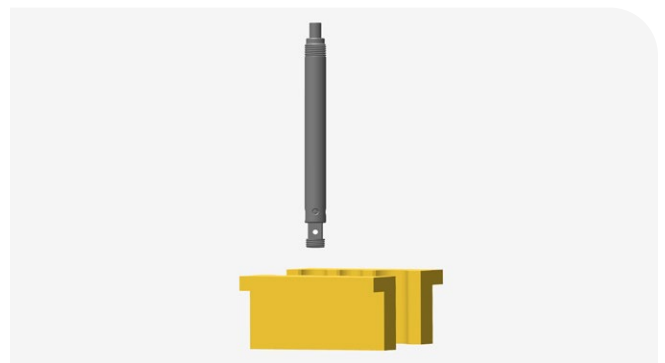
RL/Select+, RT/Select+ pictured: Procedure is the same for all models.

Eyelet	Wrench
Standard	13 mm
Bearing	29 mm
Trunnion	54 mm



- 4** Remove the damper shaft assembly from the vise and vise blocks and set it aside.

RL/Select+, RT/Select+ pictured: Procedure is the same for all models.



5 **If re-using eyelet assembly:** Clean the eyelet shaft threads with a towel only. Remove all threadlocker.

Do not spray alcohol or cleaner into the eyelet. Tap the eyelet on a flat surface to remove any loose bits of threadlocker as needed.

If replacing eyelet assembly: Discard the eyelet assembly.

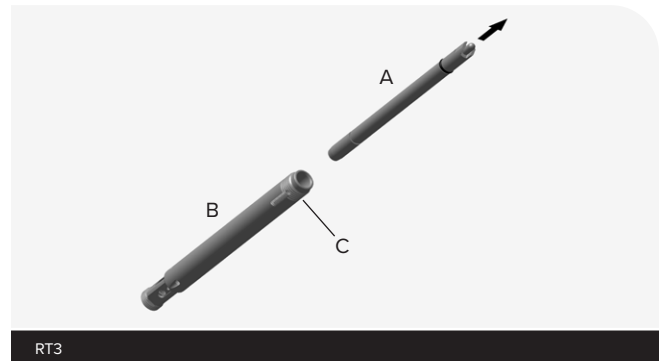
RL/Select+, RT/Select+ pictured: Procedure is the same for all models.



6 **RT3:** Remove the (A) adjuster assembly from the (B) damper shaft.

If the damper shaft will be replaced: Discard the damper shaft.

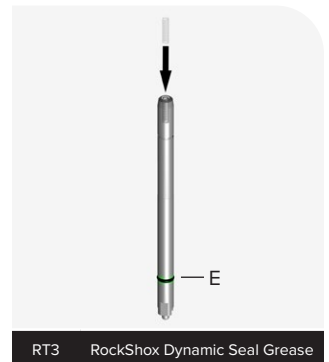
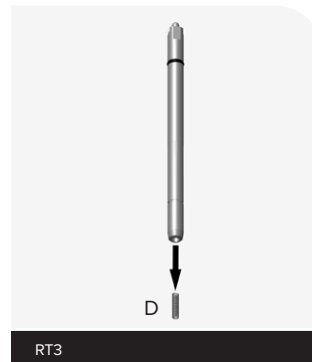
If the damper shaft will be re-used: Clean the damper shaft and (C) damper shaft threads.



Remove the (D) small spring from the inside of the adjuster tube. Tap the end of the tube on a flat surface or use a magnet to remove it. Clean the spring.

Clean the adjuster assembly. Remove the (E) o-ring. Apply grease to a new o-ring and install it.

Install the spring back inside adjuster tube.



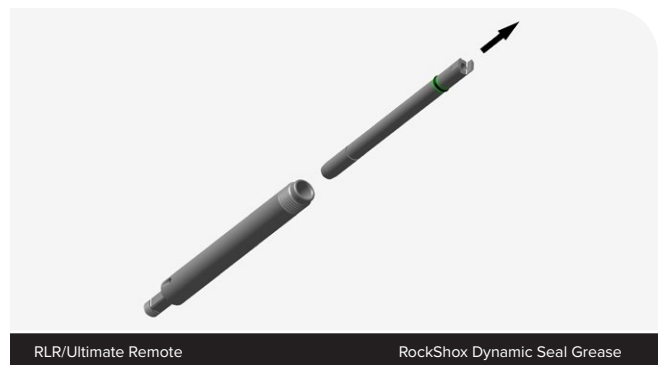
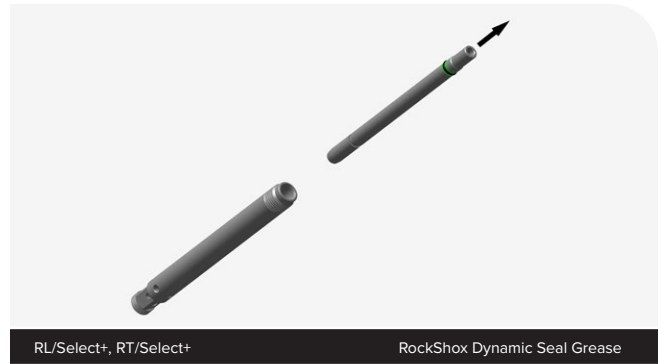
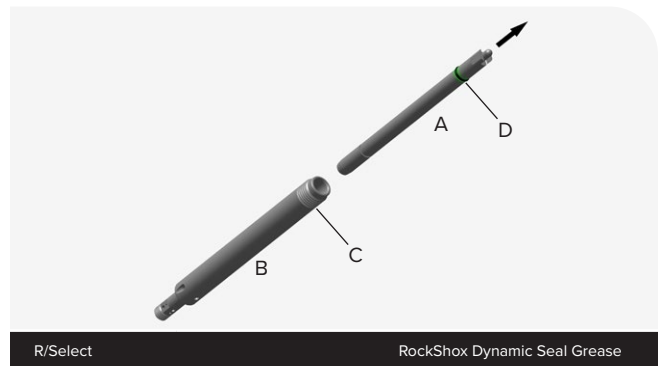
R/Select, RL/Select+, RT/Select+, RCT/Ultimate, RLR/Ultimate

Remote: Remove the (A) adjuster assembly from the (B) damper shaft.

If the damper shaft will be replaced: Discard the damper shaft.

If the damper shaft will be re-used: Clean the damper shaft and (C) damper shaft threads.

Clean the adjuster assembly. Remove the (D) o-ring. Apply grease to a new o-ring and install it.

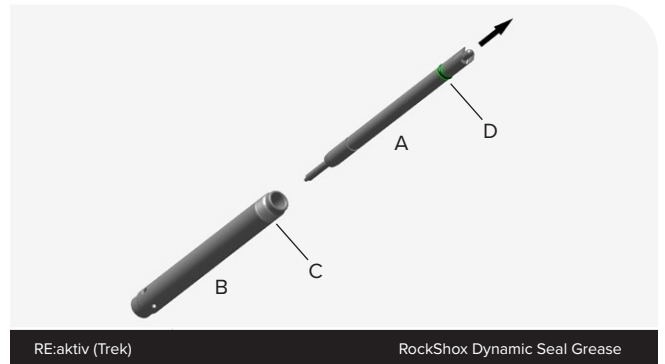


RE:aktiv, RE:aktiv Thru Shaft, NUDE RL3/NUDE RLC3: Remove the (A) adjuster assembly from the (B) damper shaft.

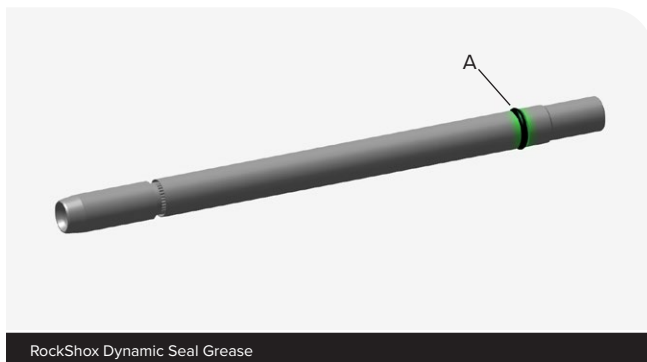
If the damper shaft will be replaced: Discard the damper shaft.

If the damper shaft will be re-used: Clean the damper shaft and (C) damper shaft threads.

Clean the adjuster assembly. Remove the (D) o-ring. Apply grease to a new o-ring and install it.

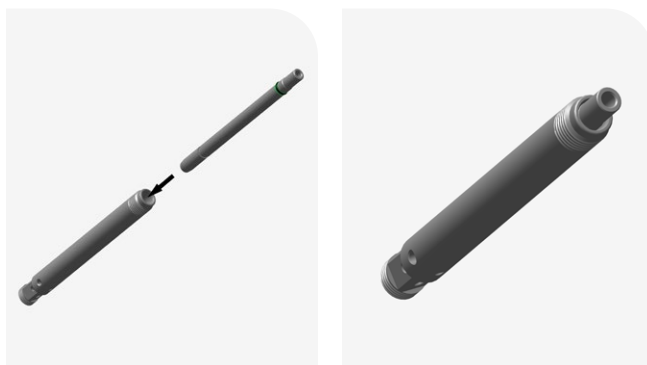


- 1** **RL/Select+, RT/Select+:** Apply grease to the adjuster assembly (A) o-ring.



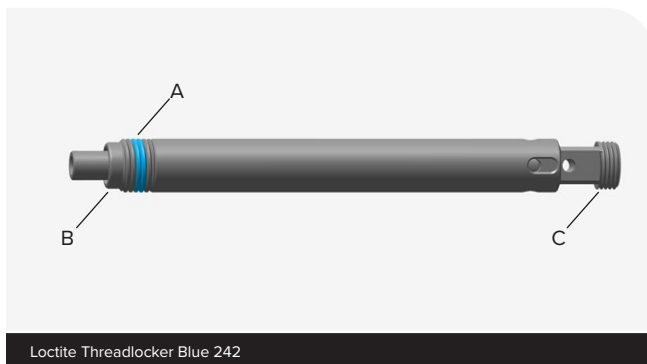
RockShox Dynamic Seal Grease

Install the adjuster assembly, tapered end first, into the eyelet/threaded end of the damper shaft until it stops.



- 2** **New damper shaft assembly or serviced assembly:** Apply Loctite Threadlocker Blue 242 to (A) 2 full threads (only apply to threads) of the damper shaft.

Do not apply Threadlocker to the (B) flat gland surface at the end of damper shaft or the (C) piston threads.

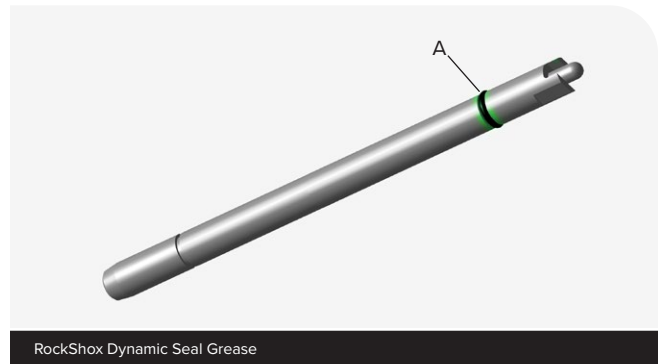


Loctite Threadlocker Blue 242

- 3** **RL/Select+, RT/Select+:** Thread the damper shaft assembly into the eyelet by hand until it stops.

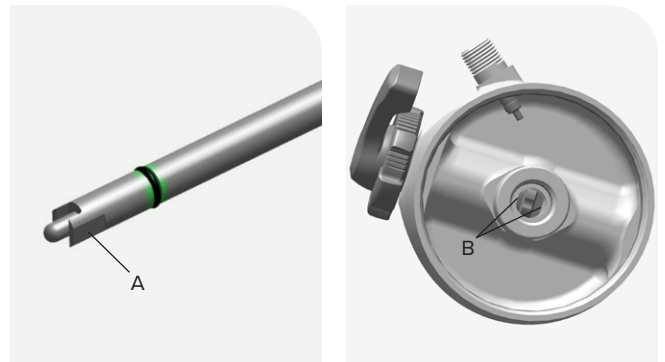


- 1 R/Select, RT3, RCT/Ultimate, RLR/Ultimate Remote, RE:aktiv:** Remove the adjuster assembly o-ring (A) and clean the adjuster assembly. Apply grease to a new o-ring and install it onto the adjuster assembly.



- 2 R/Select, RT3, RCT/Ultimate, RLR/Ultimate Remote, RE:aktiv:** Insert the (A) keyed end of the adjuster assembly into the eyelet aligned with the (B) flats edges inside the eyelet. Confirm the adjuster does not spin inside the eyelet.

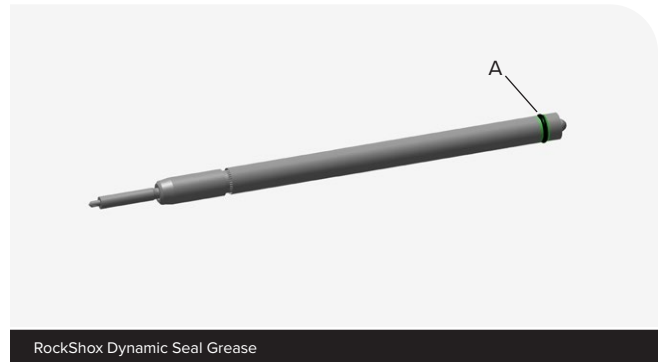
RT3 pictured: Procedure is the same for models **R/Select, RCT/Ultimate, RLR/Ultimate Remote.**



- 3** Install the damper shaft assembly over the adjuster assembly. Thread the damper shaft into the eyelet by hand until it stops.



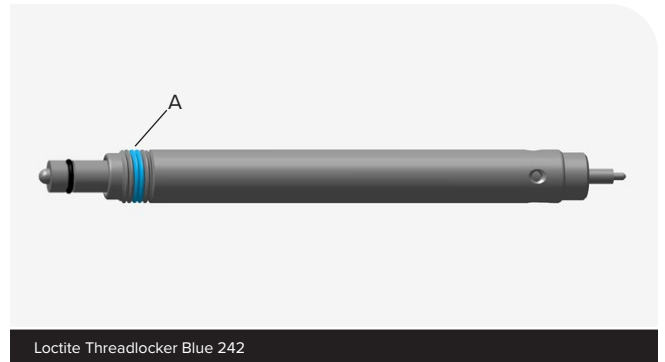
- 1 RE:aktiv Thru Shaft:** Apply grease to the adjuster assembly (A) o-ring.



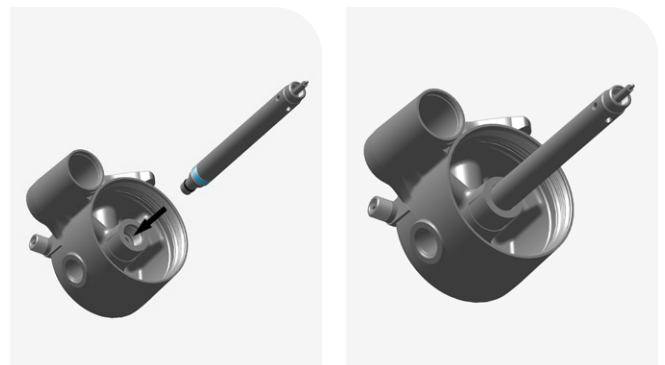
Install the adjuster assembly, tapered end first, into the eyelet/threaded end of the damper shaft until it stops.



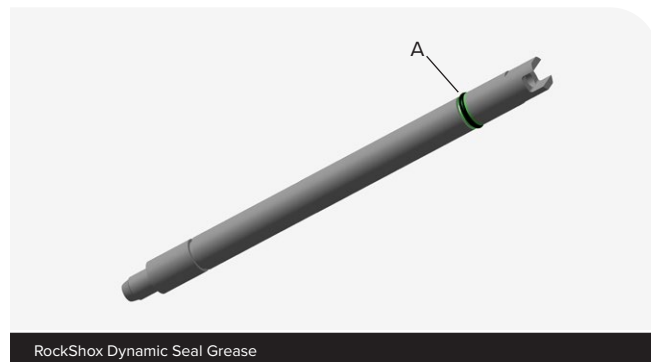
- 2** New damper shaft assembly or serviced assembly: Apply Loctite Threadlocker Blue 242 to (A) 2 full threads (only apply to threads) of the damper shaft.



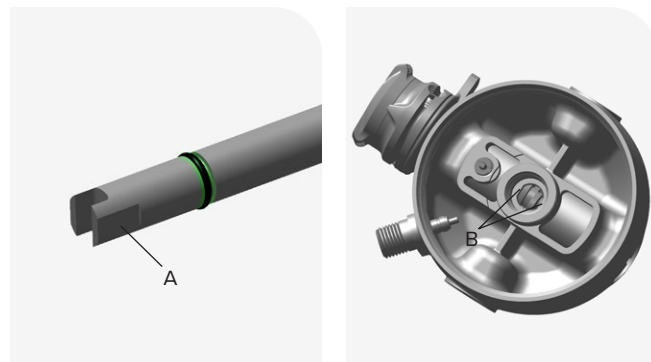
- 3 RL/Select+, RT/Select+:** Thread the damper shaft assembly into the eyelet by hand until it stops.



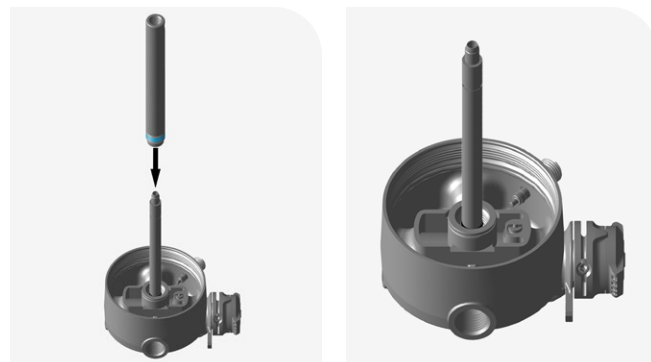
- 1 NUDE RL3/NUDE RLC3:** Remove the adjuster assembly o-ring (A) and clean the adjuster assembly. Apply grease to a new o-ring and install it onto the adjuster assembly.



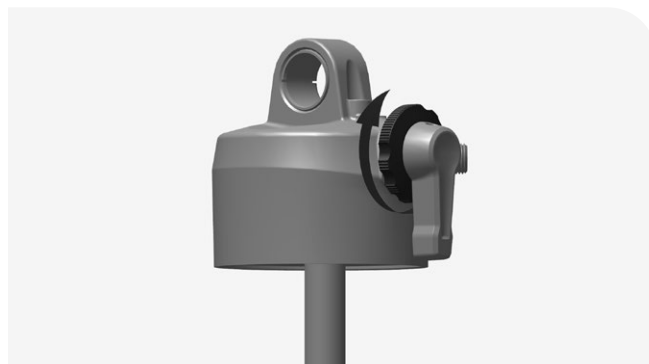
- 2 NUDE RL3/NUDE RLC3:** Insert the (A) keyed end of the adjuster assembly into the eyelet aligned with the (B) flats edges inside the eyelet. Confirm the adjuster does not spin inside the eyelet.



- 3** Install the damper shaft assembly over the adjuster assembly. Thread the damper shaft into the eyelet by hand until it stops.



1 Rotate the rebound adjuster clockwise until it stops.

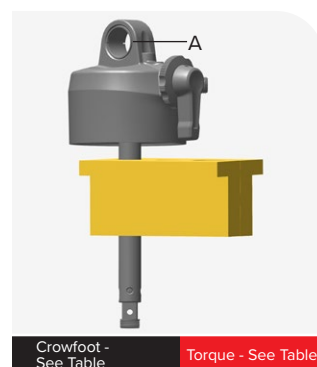
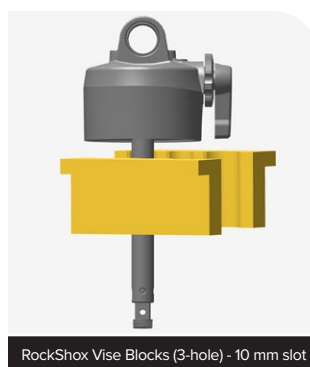


2 Clamp the damper shaft into a vise with RockShox Vise Blocks (3-hole) (10 mm slot), just below the eyelet.

Secure the wrench on the (standard, trunnion, or bearing) eyelet mount flats (A). Tighten the eyelet to the specified torque.

Remove from vise and vise blocks.

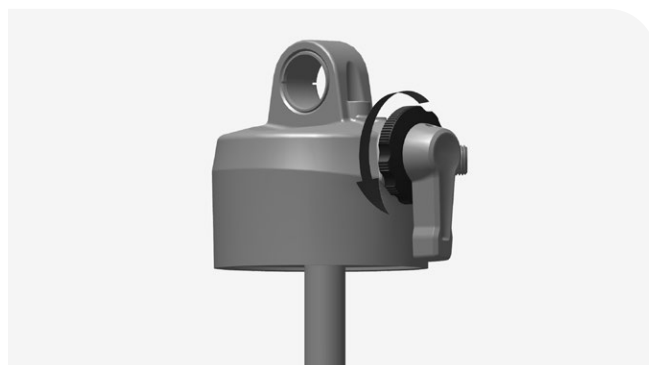
Eyelet	Crowfoot
Standard	13 mm
Bearing	29 mm
Trunnion	54 mm



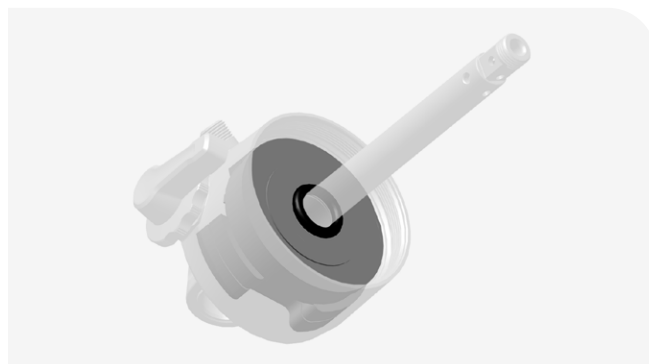
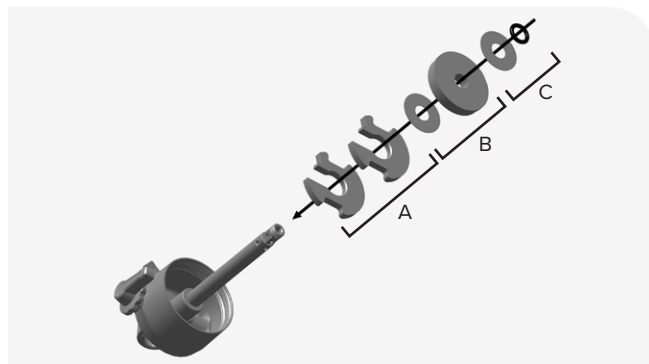
Model	Torque
R/Select	4.5 N•m (40 in-lb)
RL/Select+, RT/Select+	4.5 N•m (40 in-lb)
RT3	4.5 N•m (40 in-lb)
RCT/Ultimate	7.9 N•m (70 in-lb)
RLR/Ultimate Remote	4.5 N•m (40 in-lb)
RE:aktiv (Trek)	4.5 N•m (40 in-lb)
RE:aktiv Thru Shaft (Trek)	4.5 N•m (40 in-lb)
NUDE RL3/NUDE RLC3 (SCOTT)	7.9 N•m (70 in-lb)

3 Rotate the rebound adjuster counter clockwise until it stops.

Confirm the rebound adjuster rotates properly full clockwise and full counter clockwise.



- 4** Install the (A) volume spacers, (B) washer and travel reducer, in the same order and orientation as originally installed, if installed.
Install the (C) bottom out washer and o-ring.



Proceed with service and assembly procedures in the **Piston Service** section of the appropriate *Deluxe Service Manual (Deluxe/Deluxe NUDE, Deluxe RE:aktiv, or Deluxe RE:aktiv Thru Shaft)*, after air seal head/air piston removal.

The procedures in this manual are not included in the *Super Deluxe Service Manual*.

Prior to beginning, follow the disassembly procedures in the **Piston Service** section of the *Super Deluxe Service Manual* through air seal head/air piston removal.

RTR/Ultimate Remote: Do not install the remote spring/spool assembly until the eyelet and damper shaft is re-assembled. Remove the remote spring/spool assembly if installed into new the new reservoir neck assembly. See the *Super Deluxe Service Manual* for removal and installation procedures.

Parts, Tools, and Supplies

Parts

- Super Deluxe eyelet assembly
- Super Deluxe damper shaft assembly

Safety and Protection Supplies

- Apron
- Clean, lint-free shop towels
- Nitrile gloves
- Oil pan
- Safety glasses

Lubricants and Fluids

- Isopropyl alcohol
- RockShox Dynamic Seal Grease
- Loctite Threadlocker Blue 242

RockShox Tools

- RockShox Vise Blocks (3-hole) - 12.7 mm slot

Common Tools

- Adjustable open end wrench
- Bench vise
- Crowfoot Socket: 13 mm, 29 mm, or 54 mm
- Hex bit socket: 3 mm
- Hex wrench: 3 mm
- Torque wrench

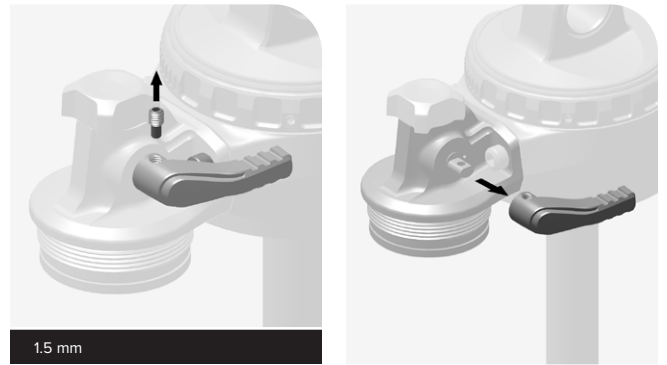
SAFETY INSTRUCTIONS

Always wear safety glasses and nitrile gloves when working with suspension oil.

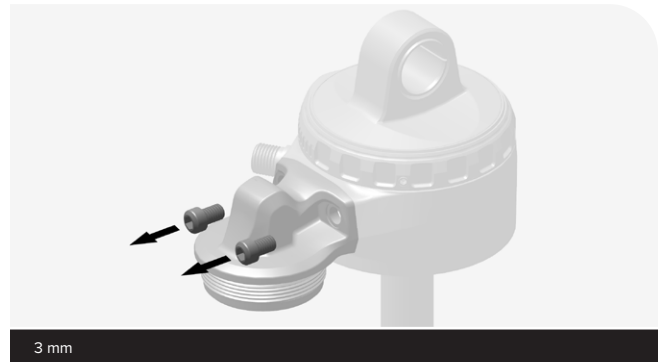
Torque Values

Deluxe	Tool	Torque
Eyelet (Standard) to Damper Shaft	13 mm Crowfoot	7.9 N•m (70 in-lb)
Eyelet (Bearing) to Damper Shaft	29 mm Crowfoot	
Eyelet (Trunnion) to Damper Shaft	54 mm Crowfoot	
Bolts - Reservoir Neck to Eyelet	3 mm Hex bit socket	2.3 N•m (20 in-lb)
Lever Screw - Lever to Cam - RT/Select+, RCT/Ultimate	1.5 mm Hex bit socket	0.73 N•m (6.5 in-lb)

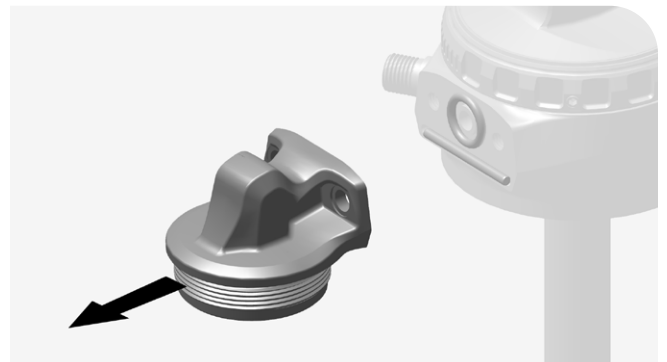
- 1 RT/Select+, RC3, RCT/Ultimate:** Rotate the lever to the open position.
Remove the lever limit screw (1.5 mm).
Remove the lever.



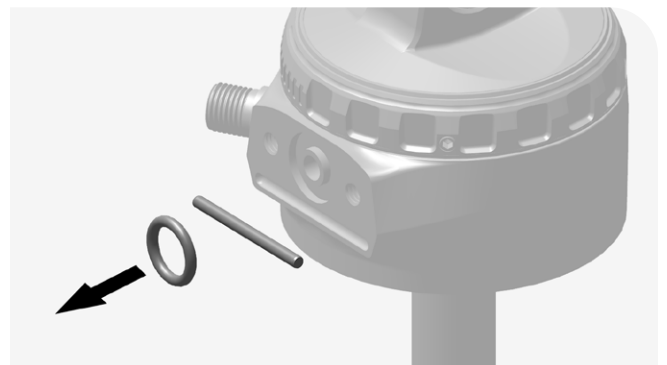
- 2 ALL:** Remove the reservoir neck/eyelet bolts (3 mm).



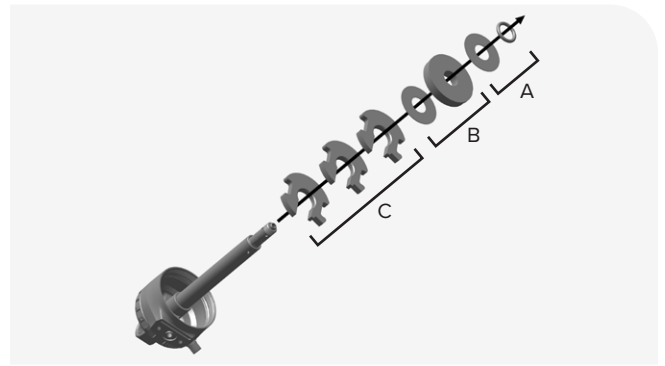
- 3 ALL:** Remove the reservoir neck.



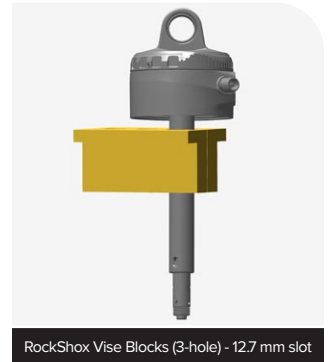
- 4 ALL:** Remove the alignment pin and reservoir o-ring.



- 5** Remove the (A) bottom out o-ring and washer, (B) travel reducer and washer (if installed), and (C) volume spacers (if installed).

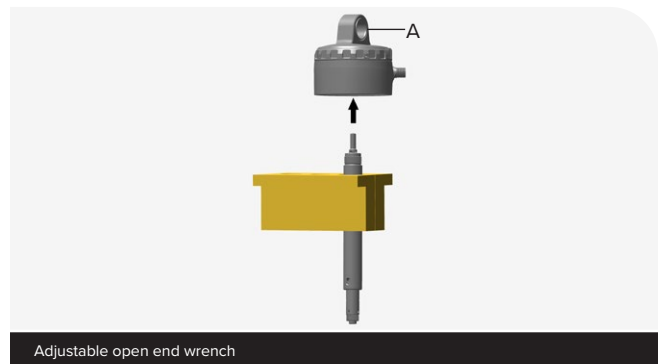


- 6** Clamp the damper shaft in a vise with RockShox Vise Blocks (3-hole) (12.7 mm slot), threads down, just below the eyelet.

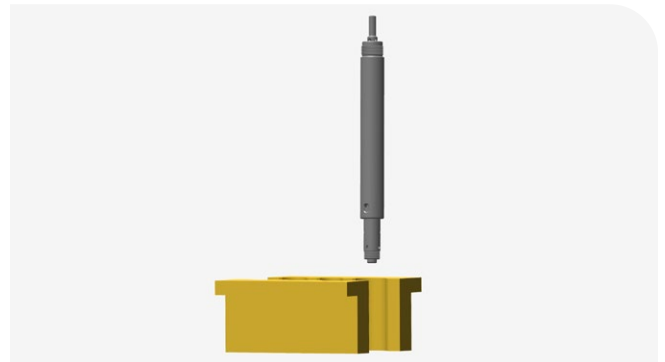


- 7** Secure the wrench on the (standard, bearing, or trunnion) eyelet mount flats (A). Unthread and remove the eyelet assembly from the damper shaft assembly.

Eyelet	Wrench
Standard	13 mm
Bearing	29 mm
Trunnion	54 mm



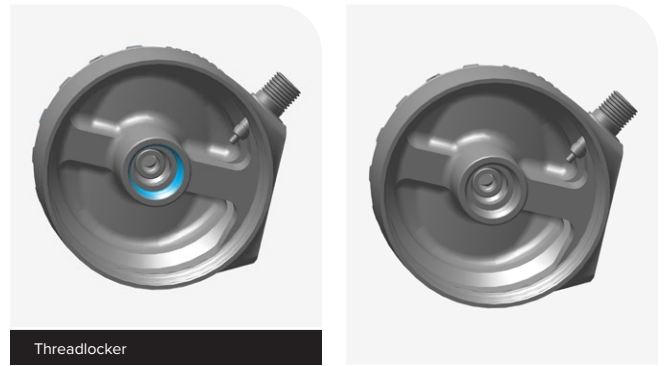
- 8** Remove the damper shaft assembly from the vise and vise blocks and set it aside.



9 **If re-using eyelet assembly:** Clean the eyelet damper shaft threads with a clean shop towel. Remove all threadlocker.

Do not spray isopropyl alcohol or cleaner into the eyelet. Tap the eyelet on a flat surface to remove any loose bits of threadlocker as needed.

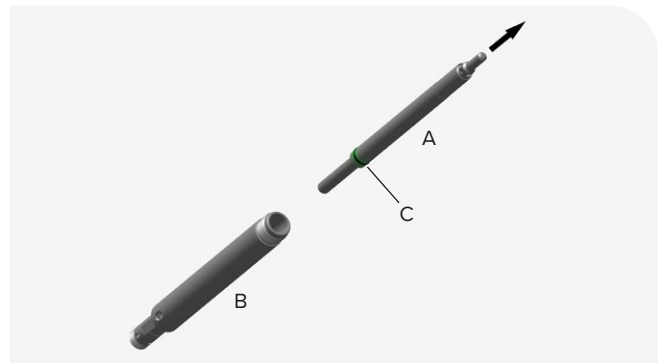
If replacing eyelet assembly: Discard the eyelet assembly.



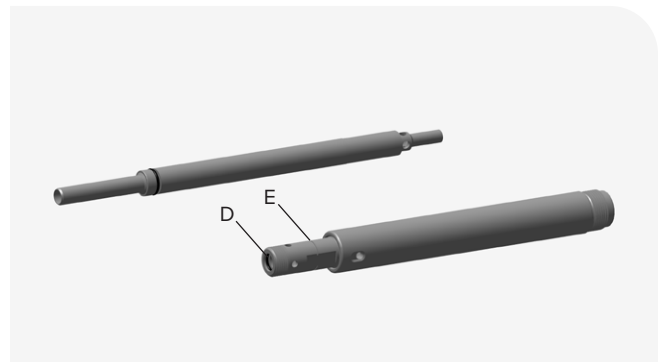
10 Remove the (A) adjuster assembly from the (B) damper shaft assembly.

If replacing damper shaft: Discard the damper shaft assembly.

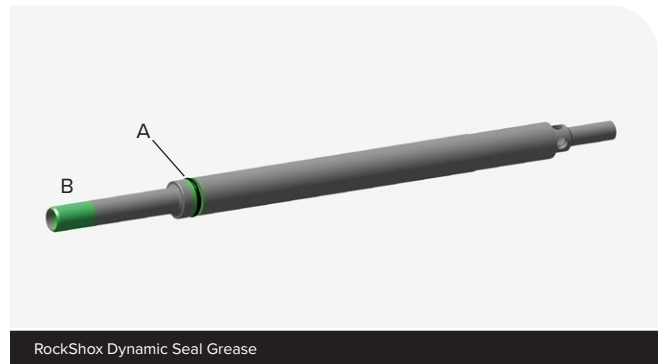
Clean the adjuster assembly. Remove the (C) o-ring. Apply grease to a new o-ring and install it.



Clean the damper shaft assembly, damper shaft threads, and the (D) o-ring inside the (E) piston stud. Do not remove the o-ring and piston stud from the damper shaft assembly.



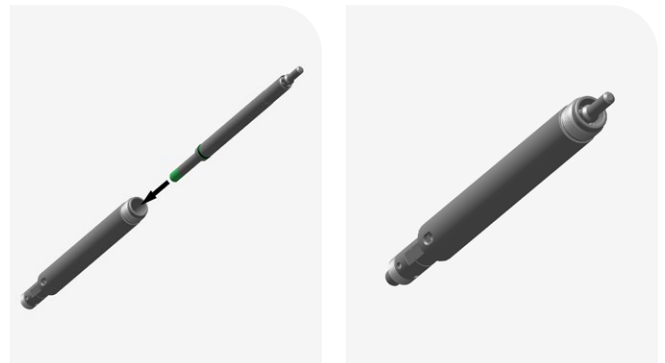
- 1 Apply grease to the adjuster needle (A) o-ring. Apply grease around the outside of the end of the (B) adjuster needle.



Apply grease to the (C) inner o-ring in the damper shaft stud.



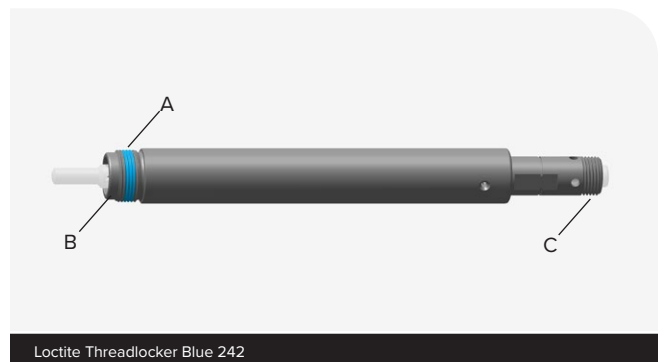
Install the adjuster needle assembly, o-ring end first, into the eyelet/ threaded end of the damper shaft until it stops.



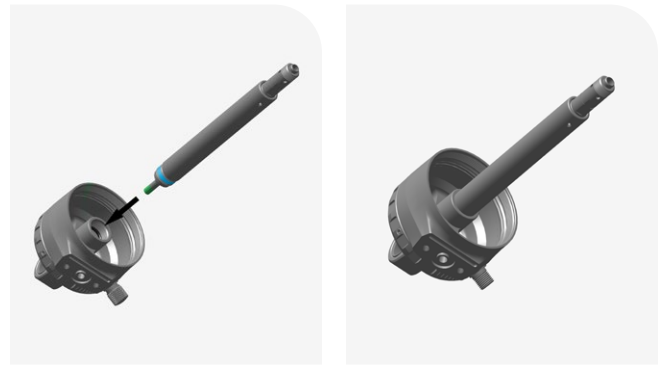
- 2 **New damper shaft assembly or serviced assembly:** Apply Loctite Threadlocker Blue 242 to the eyelet (A) threads (only apply to threads) of the damper shaft.

Do not apply Threadlocker to the (B) flat gland surface at the end of damper shaft.

Do not apply Threadlocker to the (C) shaft stud threads.



- 3** Install the damper shaft assembly into the eyelet and thread it into the eyelet by hand until it stops.



- 4** Rotate the rebound adjuster clockwise until it stops.

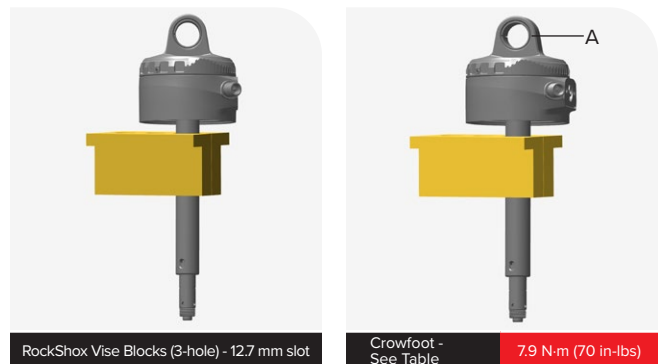


- 5** Clamp the damper shaft into a vise with RockShox Vise Blocks (3-hole) (12.7 mm slot), just below the eyelet.

Secure the wrench on the trunnion or standard eyelet mount flats (A). Tighten the eyelet to the specified torque.

Remove from vise.

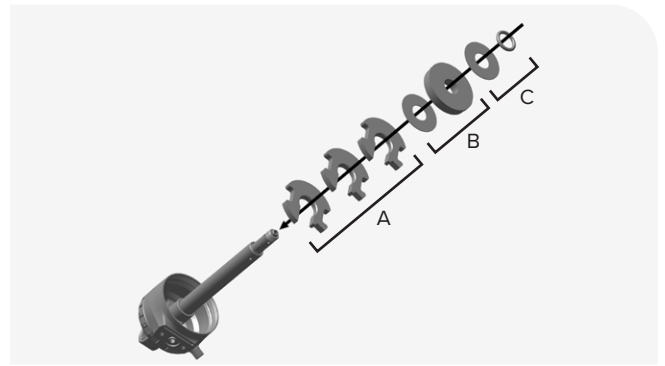
Eyelet	Crowfoot
Standard	13 mm
Bearing	29 mm
Trunnion	54 mm



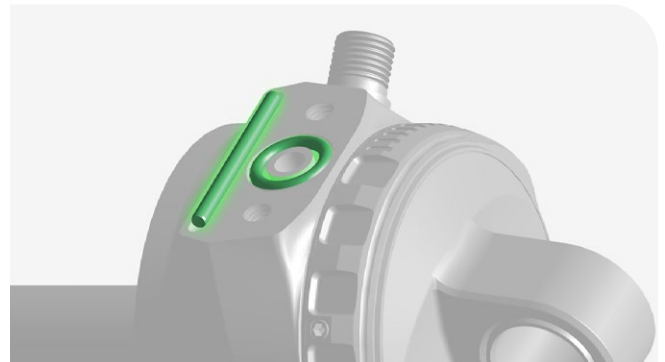
- 6** Rotate the rebound adjuster counter clockwise until it stops.
Confirm the rebound adjuster rotates properly full clockwise and full counter clockwise.



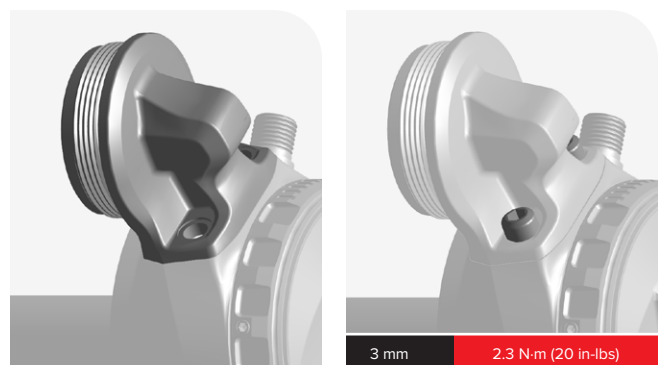
- 7** Install the (A) volume spacers, (B) washer and travel reducer, in the same order and orientation as originally installed, if installed.
Install the (C) bottom out washer and o-ring.



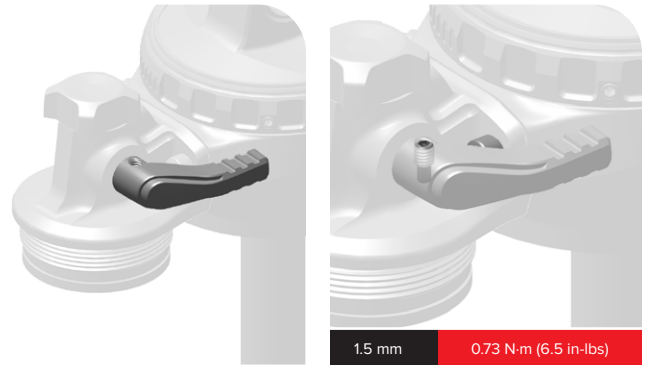
- 8** **ALL:** Apply grease to the reservoir o-ring and install it onto the reservoir neck.
Apply grease to the alignment pin and install it onto the reservoir neck.



- 9** **ALL:** Install the reservoir neck onto the eyelet.
Install the reservoir neck bolts and tighten them to the specified torque.



- 10** **RT/Select+, RC3, RCT/Ultimate:** Install the lever in the open position.
Install the lever bolt and tighten it to the specified torque.



Proceed with service and assembly procedures in the **Piston Service** section of the *Super Deluxe Service Manual* after air seal head/air piston removal.

Super Deluxe Thru Shaft

The procedures in this manual are not included in the *Super Deluxe Thru Shaft Service Manual*.

Prior to beginning, follow the disassembly procedures in the **Piston Service** section of the *Super Deluxe Thru Shaft Service Manual* through air seal head/air piston removal.

Parts, Tools, and Supplies

Parts

- Super Deluxe Thru Shaft eyelet assembly
- Super Deluxe Thru Shaft damper shaft assembly

Safety and Protection Supplies

- Apron
- Clean, lint-free shop towels
- Nitrile gloves
- Oil pan
- Safety glasses

Lubricants and Fluids

- Isopropyl alcohol
- RockShox Dynamic Seal Grease
- Loctite Threadlocker Blue 242

RockShox Tools

- RockShox Vise Blocks (3-hole) - 10 mm slot

Common Tools

- Adjustable open end wrench
- Bench vise
- Crowfoot Socket: 54 mm
- Hex bit socket: 3 mm
- Hex wrench: 3 mm
- Torque wrench

SAFETY INSTRUCTIONS

Always wear safety glasses and nitrile gloves when working with suspension oil.

Torque Values

Deluxe	Tool	Torque
Eyelet (Trunnion) to Damper Shaft	54 mm Crowfoot	7.9 N•m (70 in-lb)
Bolts - Reservoir Neck to Eyelet	3 mm Hex bit socket	2.3 N•m (20 in-lb)

Disassembly

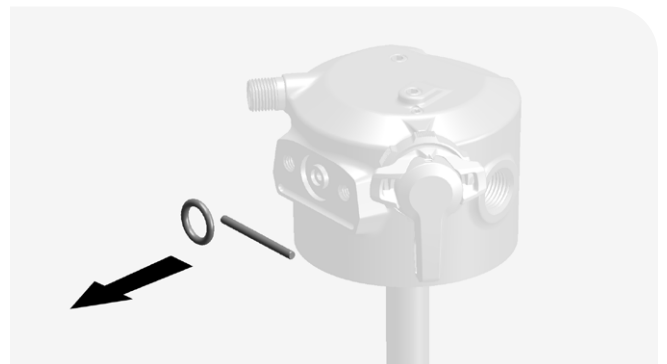
- 1 Remove the reservoir neck/eyelet bolts (3 mm).



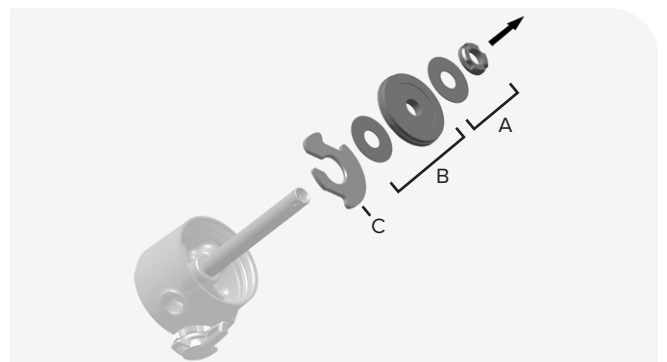
- 2 **ALL:** Remove the reservoir neck.



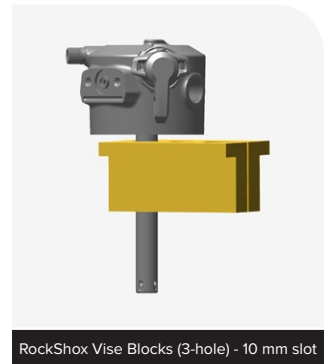
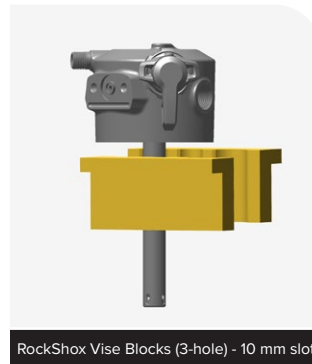
- 3 **ALL:** Remove the alignment pin and reservoir o-ring.



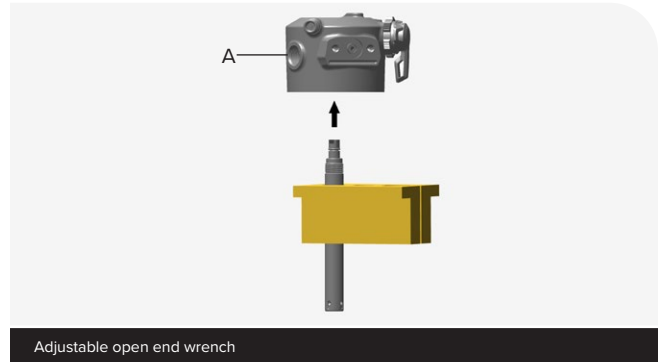
- 4 Remove the (A) bottom out o-ring and washer, (B) travel reducer and washer (if installed), and (C) volume spacers (if installed).



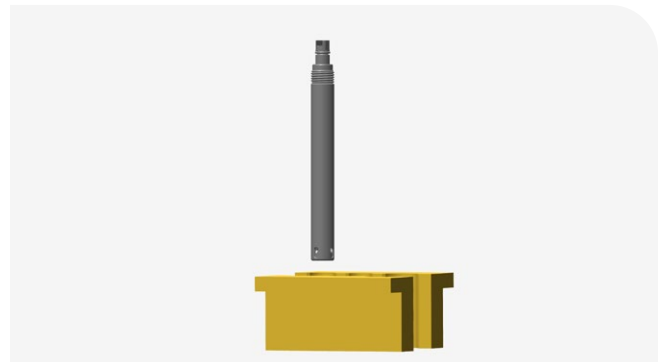
- 5 Clamp the damper shaft in a vise with RockShox Vise Blocks (3-hole) (10 mm slot), threads down, just below the eyelet.



- 6 Secure the wrench on the trunnion eyelet mount flats (A). Unthread and remove the eyelet assembly from the damper shaft assembly.



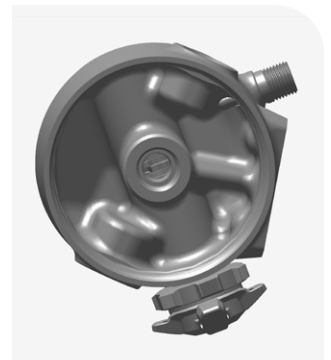
- 7 Remove the damper shaft assembly from the vise and vise blocks and set it aside.



- 8 **If re-using eyelet assembly:** Clean the eyelet damper shaft threads with a clean shop towel. Remove all threadlocker.

Do not spray isopropyl alcohol or cleaner into the eyelet. Tap the eyelet on a flat surface to remove any loose bits of threadlocker as needed.

If replacing eyelet assembly: Discard the eyelet assembly.

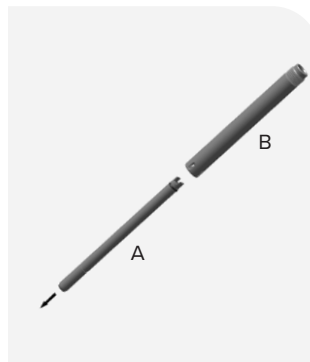


9 If replacing damper shaft: Discard the damper shaft assembly.

If re-using damper shaft: Remove the (A) rebound rod assembly from (B) damper shaft.

Remove the (C) o-ring. Clean the rebound rod assembly.

Apply grease to a new o-ring and install it onto the rebound rod..



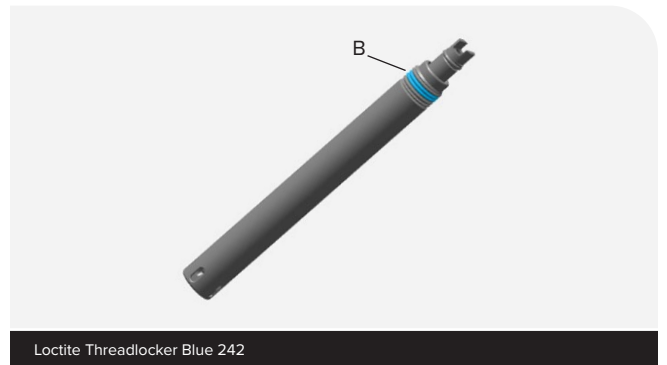
1 Install the rebound rod assembly into the damper shaft.



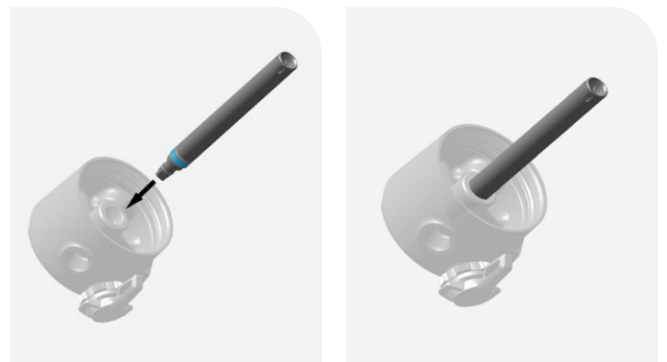
Apply grease to the rebound rod (A) o-ring.



Apply threadlocker to 2 full threads (B). Apply threadlocker to the shaft threads only.



2 Install the damper shaft assembly into the eyelet (original or new) and thread it into the eyelet by hand until it stops.



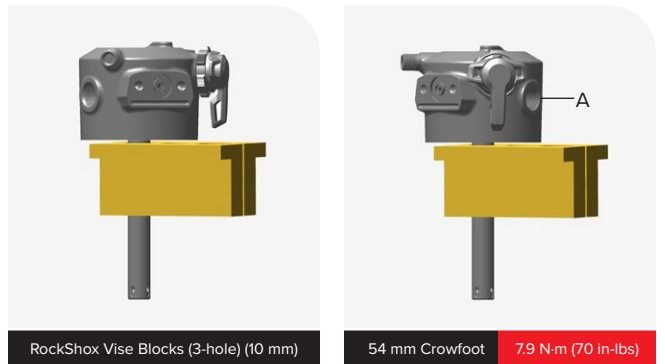
3 Rotate the rebound adjuster clockwise until it stops.



4 Clamp the damper shaft into a vise with RockShox Vise Blocks (3-hole) (10 mm slot), just below the eyelet.

Secure the wrench on the trunnion or standard eyelet mount flats (A). Tighten the eyelet to the specified torque.

Remove from vise.

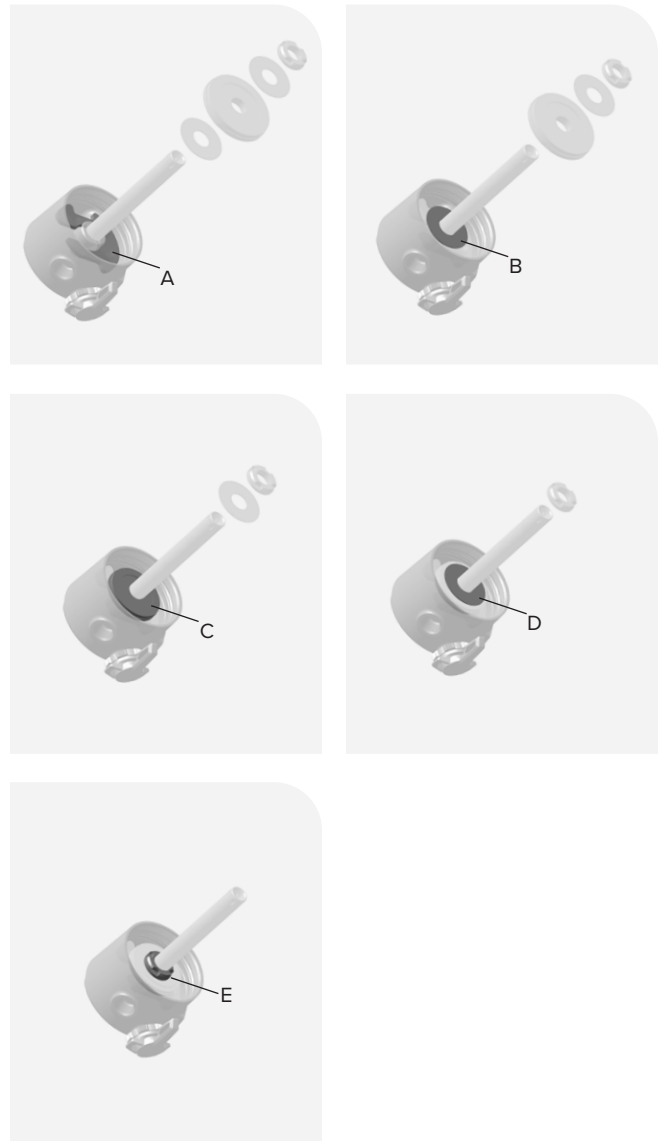


5 Rotate the rebound adjuster counter clockwise until it stops.

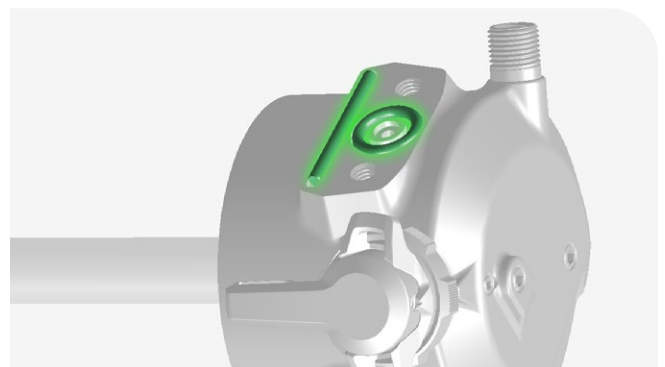
Confirm the rebound adjuster rotates properly full clockwise and full counter clockwise.



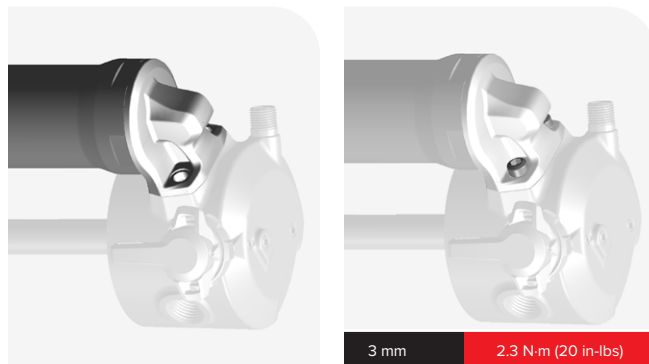
- 6** Install the (A) Bottomless Token(s) (if previously installed), (B) travel reducer washer, (C) travel reducer, (D) washer, and (E) bottom out bumper into the eyelet.



- 7** Apply grease to the reservoir o-ring and install it onto the reservoir neck.
Apply grease to the alignment pin and install it onto the reservoir neck.



- 8 Install the reservoir neck onto the eyelet.
Install the reservoir neck bolts bolts and tighten them to the specified torque.



Proceed with service and assembly procedures in the **Piston Service** section of the *Super Deluxe Thru Shaft Service Manual* after air seal head/air piston removal.

Super Deluxe Coil

The procedures in this section are not included in the *Super Deluxe Coil Service Manual*.

Begin and continue with the procedures in the *Super Deluxe Coil Service Manual* as described in each section.

One configuration is pictured, however procedures are the same for each Super Deluxe Coil variant.

Parts, Tools, and Supplies

Parts

- Super Deluxe Coil damper shaft assembly
- Super Deluxe Coil eyelet/damper body assembly
- Super Deluxe Coil reservoir assembly

Safety and Protection Supplies

- Apron
- Clean, lint-free shop towels
- Nitrile gloves
- Oil pan
- Safety glasses

Lubricants and Fluids

- Isopropyl alcohol
- RockShox Dynamic Seal Grease
- Loctite Threadlocker Blue 242

RockShox Tools

- RockShox shock pump

Common Tools

- Bench vise
- Hex bit socket: 1.5, 3 mm
- Hex wrench: 1.5, 3 mm
- Torque wrench

SAFETY INSTRUCTIONS

Always wear safety glasses and nitrile gloves when working with suspension oil.

Torque Values

Deluxe	Tool	Torque
Bolts - Reservoir Neck to Eyelet	3 mm Hex bit socket	2.3 N•m (20 in-lb)
Lever Screw - Lever to Cam - RT/Select+, RCT/Ultimate	1.5 mm Hex bit socket	0.73 N•m (6.5 in-lb)

D a m p e r S h a f t / E y e l e t

Follow steps 1 - 18 in the **Damper Service** section of the *Super Deluxe Coil Service Manual*.

If replacing the damper shaft/eyelet assembly, discard the original assembly and continue with a new assembly.



E y e l e t / D a m p e r B o d y

If a new eyelet/damper body assembly is installed, follow steps 1 - 11 in the **Damper Service** section of the *Super Deluxe Coil Service Manual*, then continue with [Reservoir Installation](#).



Removal - Reservoir - RT/Select+, RCT/Ultimate, RTR, Ultimate Remote

Before removing the reservoir assembly, follow steps 1 - 11 in the **Damper Service** section of the *Super Deluxe Coil Service Manual*.

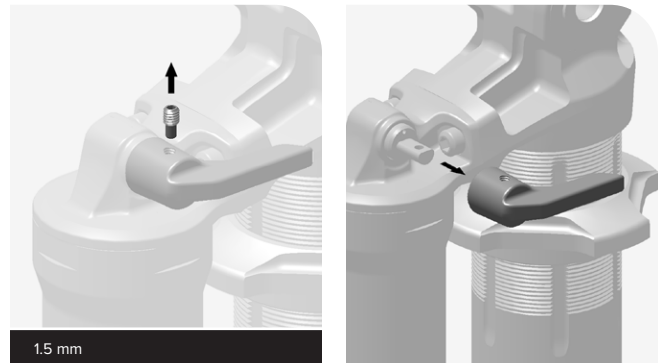
RTR, Ultimate Remote: Do not install the remote spring/spool assembly until the eyelet and damper shaft are re-assembled. Remove the remote spring/spool assembly if installed into the new reservoir neck assembly. See the *Super Deluxe Service Manual* for complete removal and installation procedures.

1 RT/Select+, RCT/Ultimate: Rotate the lever to the open position.

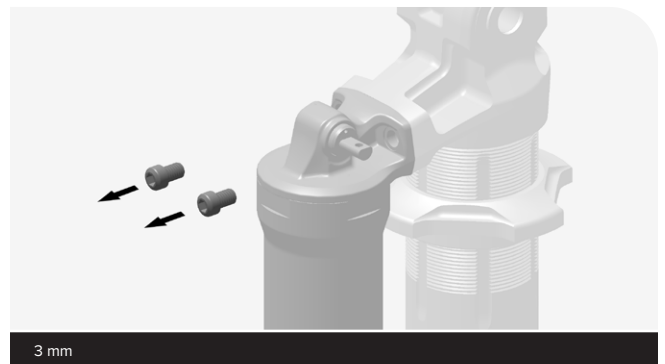
Remove the lever limit screw (1.5 mm).

Remove the lever.

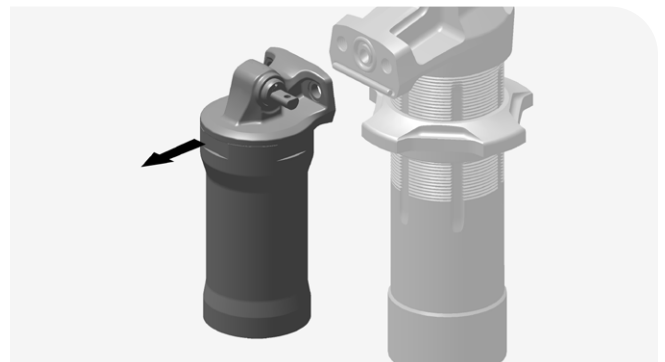
RTR, Ultimate Remote: Remove the remote spool assembly from the reservoir neck. Follow steps 1 - 2 in the **IFP Reservoir Service** section, and steps 4 - 5 in the **Remote Spring Service Replacement** section in the *Super Deluxe Coil Service Manual*.



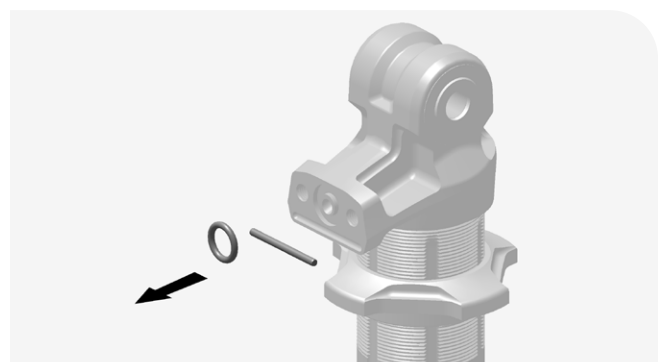
2 Remove the reservoir bolts (3 mm).



3 Remove the reservoir assembly.



4 Remove the alignment pin and reservoir o-ring.



A new reservoir assembly can be installed onto an existing or new replacement Super Deluxe Coil eyelet/damper body assembly.

If installing a new reservoir assembly onto new eyelet/damper body assembly, discard the original eyelet/damper body assembly.

1 New Reservoir assembly: Disassemble the new reservoir assembly for installation if pre-assembled.

Refer to the *Super Deluxe Coil Service Manual* for detailed disassembly procedures.

ALL models

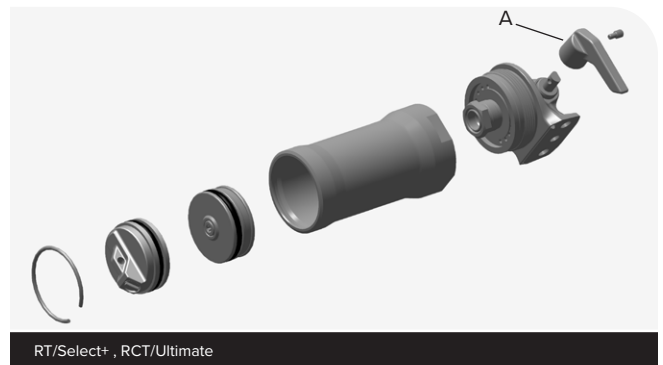
1. Remove the air valve cap.
2. Remove the Schrader valve core.
3. Push the reservoir cap into the reservoir until it stops.
4. Remove the clip.
5. Remove the air cap.
6. Remove the reservoir can from the neck.
7. Remove the IFP from the reservoir can.

RT/Select+, RCT/Ultimate:

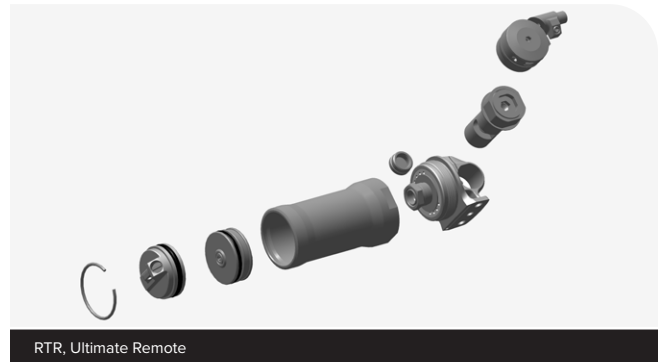
1. Remove the lever (A).

RTR, Ultimate Remote:

1. Remove the remote spool, cable housing stop clamp, and remote assembly.



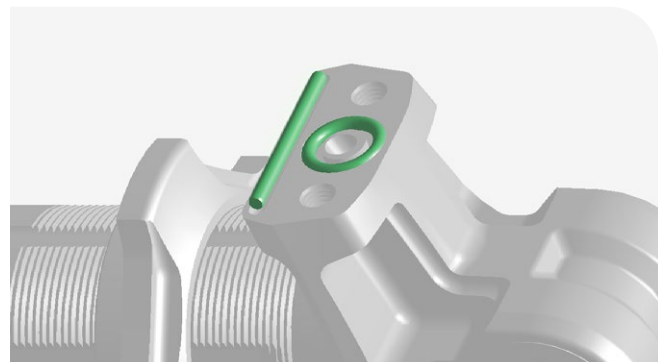
RT/Select+, RCT/Ultimate



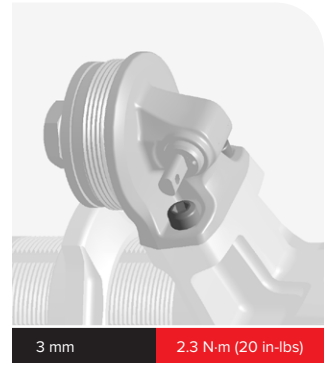
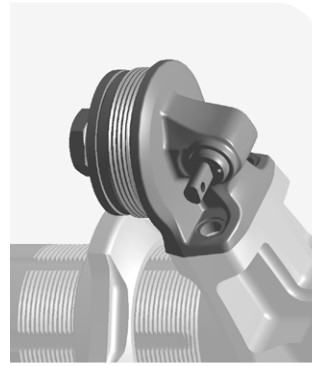
RTR, Ultimate Remote

2 Apply grease to the reservoir o-ring and install it onto the reservoir neck.

Apply grease to the alignment pin and install it onto the reservoir neck.

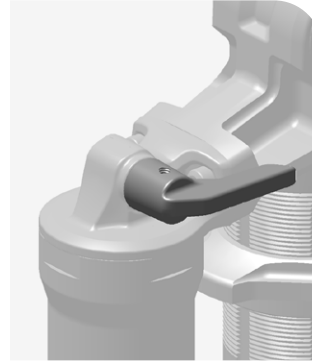


- 3** Install the reservoir assembly onto the reservoir neck.
Install the reservoir neck bolts and tighten them to the specified torque.



- 4** **RT/Select+, RCT/Ultimate:** Install the lever in the open position.
Install the lever bolt and tighten it to the specified torque.

RTR, Ultimate Remote: Refer to the *Super Deluxe Coil Service Manual* for remote assembly installation procedures.



Proceed with assembly procedures in the *Super Deluxe Coil Service Manual* - **Super Deluxe Coil Assembly and Bleed** section, step 3.

These are registered trademarks of SRAM, LLC:

1:1®, Accuwatt®, Avid®, ATAC®, AXS®, Bar®, Bioposition®, Blackbox®, BoXXer®, DoubleTap®, eTap®, Firecrest®, Firex®, Grip Shift®, GXP®, Holzfelder®, Hussefelt®, Icllic®, i-Motion®, Judy®, Know Your Powers®, NSW®, Omnium®, Osmos®, Pike®, PowerCal®, PowerLock®, PowerTap®, Qollector®, Quarq®, RacerMate®, Reba®, Rock Shox®, Ruktion®, Service Course®, ShockWiz®, SID®, Single Digit®, Speed Dial®, Speed Weaponry®, Spinscan®, SRAM®, SRAM APEX®, SRAM EAGLE®, SRAM FORCE®, SRAM RED®, SRAM RIVAL®, Stylo®, TIME®, Truvativ®, TyreWiz®, UDH®, Varicrank®, Velotron®, X0®, X01®, X-SYNC®, XX1®, Zipp®

These are registered logos of SRAM, LLC:



These are trademarks of SRAM, LLC:

10K™, 1X™, 202™, 30™, 30 Course™, 35™, 302™, 303™, 353™, 404™, 454™, 808™, 858™, 3ZERO MOTO™, ABLC™, AeroGlide™, AeroBalance™, AeroLink™, Airea™, Air Guides™, AKA™, AL-7050-TV™, Atmos™, Automatic Drive™, AxCad™, Axial Clutch™, Base™, BB5™, BB7™, BB30™, Bleeding Edge™, Blipbox™, BlipClamp™, BlipGrip™, Blips™, Bluto™, Bottomless Tokens™, Cage Lock™, Carbon Bridge™, Centera™, Charger 2™, Charger™, Charger Race Day™, Cleansweep™, Clickbox Technology™, Clics™, Code™, Cognition™, CoLab™, Connectamajig™, Counter Measure™, CYCLO™, DD3™, DD3 Pulse™, DebonAir™, Deluxe™, Deluxe Re:Aktiv™, Descendant™, DFour™, DFour91™, DH™, Dig Valve™, DirectLink™, Direct Route™, Domain™, DOT 5.1™, Double Decker™, Double Time™, Dual Flow Adjust™, Dual Position Air™, DUB™, DUB-PWR™, DZero™, E300™, E400™, Eagle™, E-Connect4™, ErgoBlade™, ErgoDynamics™, ESP™, EX1™, Exact Actuation™, Exogram™, Flow Link™, FR-5™, Full Pin™, G2™, G40™, Giga Pipe™, Gnar Dog™, Guide™, GS™, GX™, Hard Chrome™, Hexfin™, HollowPin™, Howitzer™, HRD™, Hybrid Drive™, Hyperfoil™, i-3™, Impress™, Jaws™, Jet™, Kage™, Komfy™, LINK™, Lyrik™, MatchMaker™, Maxle™, Maxle 360™, Maxle DH™, Maxle Lite™, Maxle Lite DH™, Maxle Stealth™, Maxle Ultimate™, Micro Gear System™, Mini Block™, Mini Cluster™, Monarch™, Monarch Plus™, Motion Control™, Motion Control DNA™, MRX™, MX™, Noir™, NX™, OCT™, OmniCal™, OneLoc™, Paceline™, Paragon™, PC-1031™, PC-110™, PC-1170™, PG-1130™, PG-1050™, PG-1170™, Piggyback™, Poploc™, Power Balance™, Power Bulge™, PowerChain™, PowerDomeX™, Powered by SRAM™, PowerGlide™, PowerLink™, Power Pack™, Power Spline™, Predictive Steering™, Pressfit™, Pressfit 30™, Prime™, Qalvin™, R2C™, Rapid Recovery™, Re:Aktiv ThruShaft™, Recon™, Reverb™, Revelation™, Riken™, Roller Bearing Clutch™, Rolling Thunder™, RS-1™, Rudy™, Rush™, RXS™, Sag Gradients™, Sawtooth™, SCT - Smart Coasterbrake Technology™, Seeker™, Sektor™, SHIFT™, ShiftGuide™, Shorty™, Showstopper™, SIDLuxe™, Side Swap™, Signal Gear Technology™, SL™, SL-70™, SL-70 Aero™, SL-70 Ergo™, SL-80™, SL-88™, SLC2™, SL SPEED™, SL Sprint™, Smart Connect™, Solo Air™, Solo Spoke™, Speciale™, SpeedBall™, Speed Metal™, SRAM APEX 1™, SRAM Force 1™, SRAM RIVAL 1™, S-series™, Stealth-a-majig™, StealthRing™, Super-9™, Supercork™, Super Deluxe™, Super Deluxe Coil™, SwingLink™, SX™, Tangente™, TaperCore™, Timing Port Closure™, TSE Technology™, Tool-free Reach Adjust™, Top Loading Pads™, Torque Caps™, TRX™, Turnkey™, TwistLoc™, VCLC™, Vivid™, Vivid Air™, Vuka Aero™, Vuka Alumina™, Vuka Bull™, Vuka Clip™, Vuka Fit™, Wide Angle™, WiFLI™, X1™, X3™, X4™, X5™, X7™, X9™, X-Actuation™, XC™, X-Dome™, XD™, XDR™, XG-1150™, XG-1175™, XG-1180™, XG-1190™, X-Glide™, X-GlideR™, X-Horizon™, XLoc Sprint™, XPLR™, XPRESSO™, XPRO™, X-Range™, XX™, Yari™, ZEB™, Zero Loss™, ZM2™, ZR1™



Specifications and colors subject to change without prior notice.
© 2021 SRAM, LLC

This publication includes trademarks and registered trademarks of the following companies:

Loctite® and 242™ are registered trademarks of Henkel Corporation.

Maxima™ and Plush™ are trademarks owned by Maxima Racing Oils.

NUDE™ is a trademark of Scott Sports SA. SCOTT® is a registered trademark of Scott Sports SA.

Re:aktiv™ and Thru Shaft™ are trademarks owned by Trek Bicycle Corporation. Trek® is a registered trademark of Trek Bicycle Corporation.

ASIAN HEADQUARTERS

SRAM Taiwan
No. 1598-8 Chung Shan Road
Shen Kang Hsiang, Taichung City
Taiwan R.O.C.

WORLD HEADQUARTERS

SRAM LLC
1000 W. Fulton Market, 4th Floor
Chicago, Illinois 60607
U.S.A.

EUROPEAN HEADQUARTERS

SRAM Europe
Paasbosweg 14-16
3862ZS Nijkerk
The Netherlands