

ROCKSHOX

TwistLoc Ultimate



SERVICE MANUAL



SAFETY FIRST!

We care about YOU. Please, always wear your safety glasses and protective gloves when servicing RockShox products.

Protect yourself! Wear your safety gear!

TABLE OF CONTENTS

ROCKSHOX SERVICE	4
PART PREPARTION.....	4
MODEL CODE IDENTIFICATION.....	4
WARRANTY AND TRADEMARK.....	4
TWISTLOC ULTIMATE REMOTE	5
PARTS, TOOLS, AND SUPPLIES.....	5
TORQUE VALUES.....	5
EXPLODED VIEW- TWISTLOC ULTIMATE.....	6
REMOTE THROTTLE AND HOUSING SERVICE.....	7

RockShox Service

We recommend that you have your RockShox component serviced by a qualified bicycle mechanic. Servicing RockShox components requires knowledge of components, as well as the use of specialized tools and lubricants/fluids. Failure to follow the procedures outlined in this service manual may cause damage to your component and void the warranty.

Visit www.sram.com/service for the latest RockShox Spare Parts catalog and technical information. For order information, please contact your local SRAM distributor or dealer.

Information contained in this publication is subject to change at any time without prior notice.

Your product's appearance may differ from the pictures contained in this publication.



For recycling and environmental compliance information, please visit www.sram.com/company/environment.

Part Preparation

Remove the component from the bicycle before service.

Disconnect and remove the remote cable or hydraulic hose from the fork or rear shock, if applicable. For additional information about RockShox remotes, user manuals are available at www.sram.com/service.

Clean the exterior of the product with mild soap and water to avoid contamination of internal sealing part surfaces.

Model Code Identification

Product model code and specification details can be identified with the serial number on the product. Model codes can be used to identify the product type, series name, model name, and product version associated with the production model year. Product details can be used to identify spare parts, service kit, and lubricant compatibility.

Model Code example: **RM-TLOC-ULT-B1**

RM = Product Type - **Remote**

TLOC = Platform/Series - **TwistLoc**

ULT = Model - **Ultimate**

B1 = Version - (**B** - second generation, **1** - first iteration)

To identify the model code, locate the serial number on the product and enter it into the **Search by Model Name or Serial Number** field at www.sram.com/service.

Warranty and Trademark

For SRAM Warranty information, visit www.sram.com/warranty.

For SRAM Trademark information, visit: www.sram.com/website-terms-of-use.

TwistLoc Ultimate Remote

Prior to beginning, remove the remote from the handlebar and cable housing. Thoroughly clean the remote. Separate the throttle from the grip, if applicable. For cable routing instructions consult the Remotes User Manual at www.sram.com/service. For spare part kit contents and details, refer to the RockShox Spare Parts Catalog at www.sram.com/service.

Parts, Tools, and Supplies

Parts

- Remote Twist Grip - 2 Position (2P) and 3 Position (3P) - TwistLoc Ultimate B1+ (2024+)
- Remote Cable Guide - 30 degree and straight - TwistLoc Ultimate B1+ (2024+)

Common Tools

- Hex wrench: 2.5 mm
- Pick, fine point
- Torque wrench

Safety and Protection Supplies

- Apron
- Clean, lint-free shop towels
- Nitrile gloves
- Safety glasses

Lubricants and Fluids

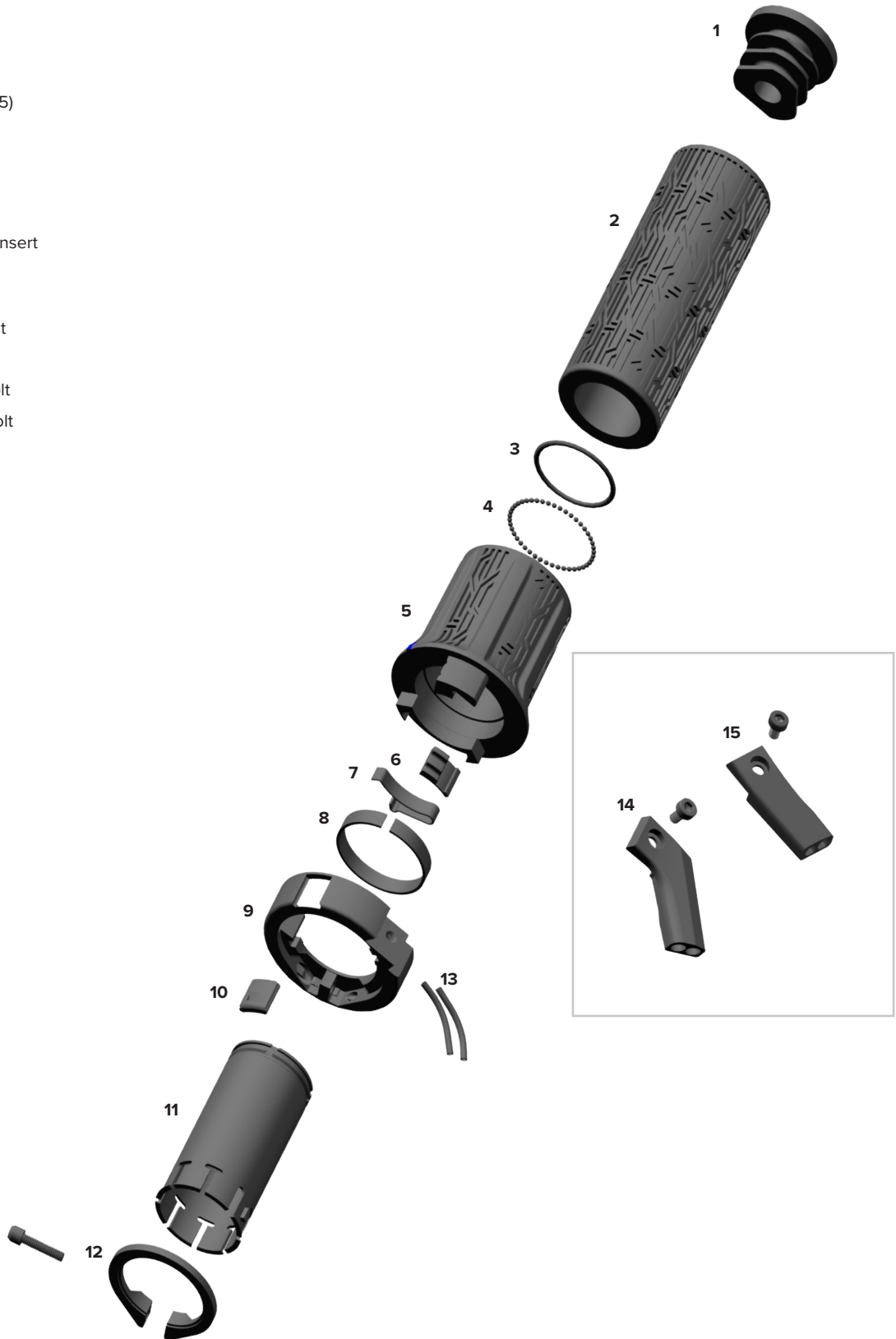
- Isopropyl alcohol
- SRAM Butter grease

Torque Values

Remote	Tool	Torque
Clamp bolt	2.5 mm hex	Remote not installed on bar: 0.1 N·m (1 in-lb) Remote installed on bar: 1.1 N·m (10 in-lb)
Cable guide bolt	2.5 mm hex	0.7 N·m (6 in-lb)

Exploded View - TwistLoc Ultimate

1. End plug
2. Grip
3. O-ring
4. Ball bearings (QTY: 45)
5. Throttle body
6. Slider
7. Detent spring
8. White bushing
9. Housing and detent insert
10. Plug
11. Body tube
12. Clamp and clamp bolt
13. Cable liner(s)
14. Curved guide and bolt
15. Straight guide and bolt



Remote Throttle and Housing Service

The procedure for the 2P and 3P remote are the same. The photos in this section show the 3P remote.

- 1 Rotate the remote to the Open position. Remove the plug.



- 2 Remove the clamp bolt.



- 3 Remove the cable guide bolt. Remove the cable guide.



- 4 Remove the cable(s).



5 Remove and discard the cable liners.



6 Remove and discard the o-ring from the throttle.

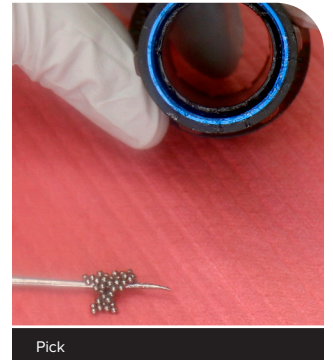


Pick

7 Remove the forty-five bearing balls from the groove in the throttle. Use the pick to guide the balls to the exit groove in the aluminum channel.
All forty-five bearing balls must be removed before proceeding.



Pick

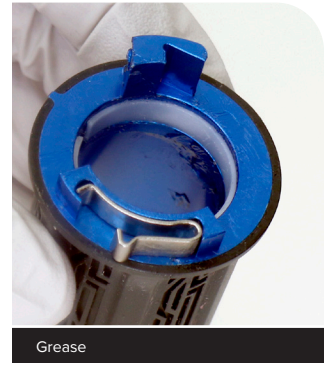


Pick

8 Remove the clamp, housing, and body tube from the throttle.



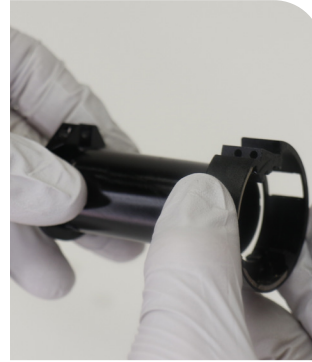
- 9** For spare part kits with a new throttle body: discard the throttle.
For spare part kits without a new throttle body: remove the detent spring and white bushing from the throttle. Clean the throttle with isopropyl alcohol.
Apply grease to the new white bushing and new detent spring and install in the throttle.



- 10** Remove the housing from the body tube. Remove the slider from the inside of the housing. Clean the housing with isopropyl alcohol. Apply grease to the detent insert.

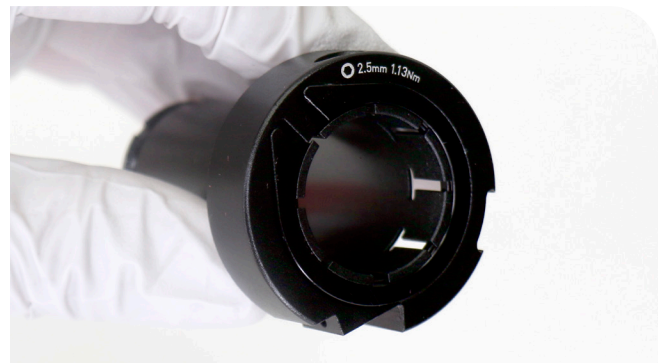
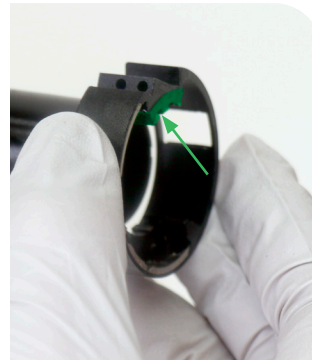
NOTICE

Do not remove the detent insert; it does not need to be replaced. Removing the detent insert will damage the housing.



- 11** Install a new slider under the RockShox logo so the smooth side is facing the center of the housing. Install the body tube through the center of the housing so the pointed end of the tube installs flush in the housing.

Make sure the slider remains seated below the cable guide holes.



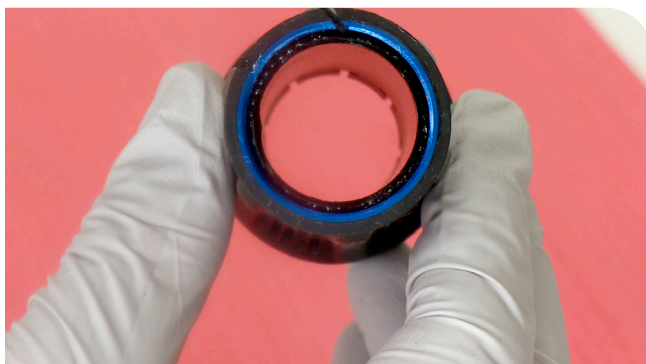
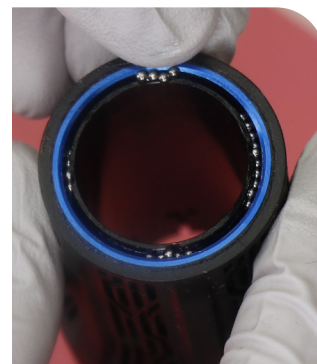
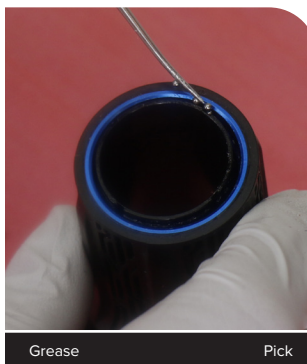
- 12** Install the housing/body tube assembly onto the throttle. Align the blue line on the throttle with **Open**. Compress the detent spring and press together.



- 13** Apply grease to the end of a pick. Use the pick to guide forty-five bearing balls down the 4 keyways and into the deepest aluminum groove. Evenly disperse steel balls into each of the 4 keyways to uniformly distribute them.

The upper groove is the o-ring gland. No bearing balls should remain in this location.

Forty-five bearing balls must be installed before proceeding.

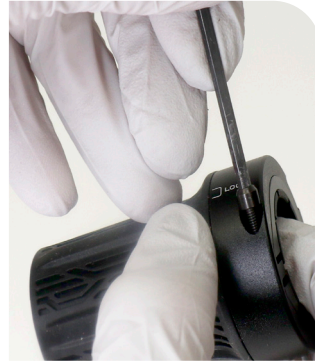


- 14** Apply grease over the top of the bearing balls. Install a new o-ring into the o-ring gland.

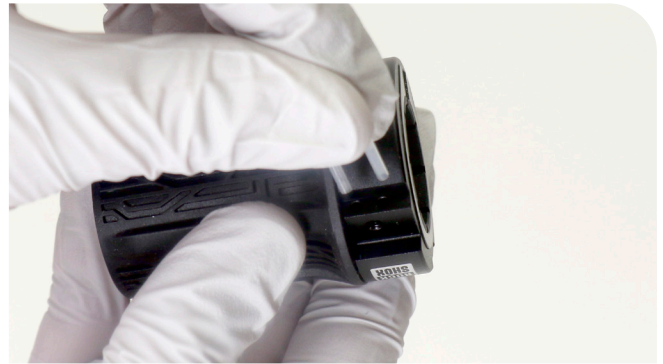


- 15** Install the clamp bolt.

Clamp bolt torque off bar	0.6 N·m (1 in-lb)
Clamp bolt torque on bar	1.1 N·m (10 in-lb)



- 16** Install new cable liner(s).



- 17** Install a short cable into the upper hole. Install a long cable into the lower hole. Install the plug.



18 Install the cables through the cable guide. Install and tighten the cable guide bolt.

Do not overtighten the bolt.



19 Clean the assembly with isopropyl alcohol.



This concludes the service for the RockShox TwistLoc Ultimate Remote.

ASIAN HEADQUARTERS

SRAM Taiwan
No. 1598-8 Chung Shan Road
Shen Kang Hsiang, Taichung City
Taiwan

WORLD HEADQUARTERS

SRAM LLC
1000 W. Fulton Market, 4th Floor
Chicago, Illinois 60607
U.S.A.

EUROPEAN HEADQUARTERS

SRAM Europe
Paasbosweg 14-16
3862ZS Nijkerk
The Netherlands