

SRAM®



PREDICTIVE STEERING HUBS

Hub Play Adjustment
2015 - Present

Service Manual

Some riders have experienced unintended bearing play in SRAM Predictive Steering hubs. To eliminate bearing play, adjust the preload on the bearing by removing the spacer sleeve from the hub. This manual provides instructions on how to remove the spacer sleeve and reassemble the hub properly to eliminate bearing play.



SRAM®

GEN. 000000004728 Rev C
© 2015 SRAM, LLC

Hub Service

We recommend that you have your SRAM hubs serviced by a qualified bicycle mechanic. Servicing SRAM products requires knowledge of bicycle components as well as the special parts and tools used for service.

For exploded diagram and part number information, please refer to the Spare Parts Catalog available on our web site at sram.com/service.

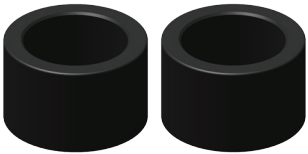
For order information, please contact your local SRAM distributor or dealer.

Information contained in this publication is subject to change at any time without prior notice. For the latest technical information, please visit our website at sram.com/service.

Your product's appearance may differ from the pictures/diagrams contained in this publication.

Tools Needed for Service

- Nitrile gloves
- Apron
- Clean, lint-free rags
- 1.5 mm hex wrench
- Punch
- Soft faced mallet
- SRAM Butter
- (2) SRAM Bearing Press Tools 275377
- Wheels Manufacturing Press-1 Sealed Bearing Press Kit
- 6806 adapter from Press-1 Kit

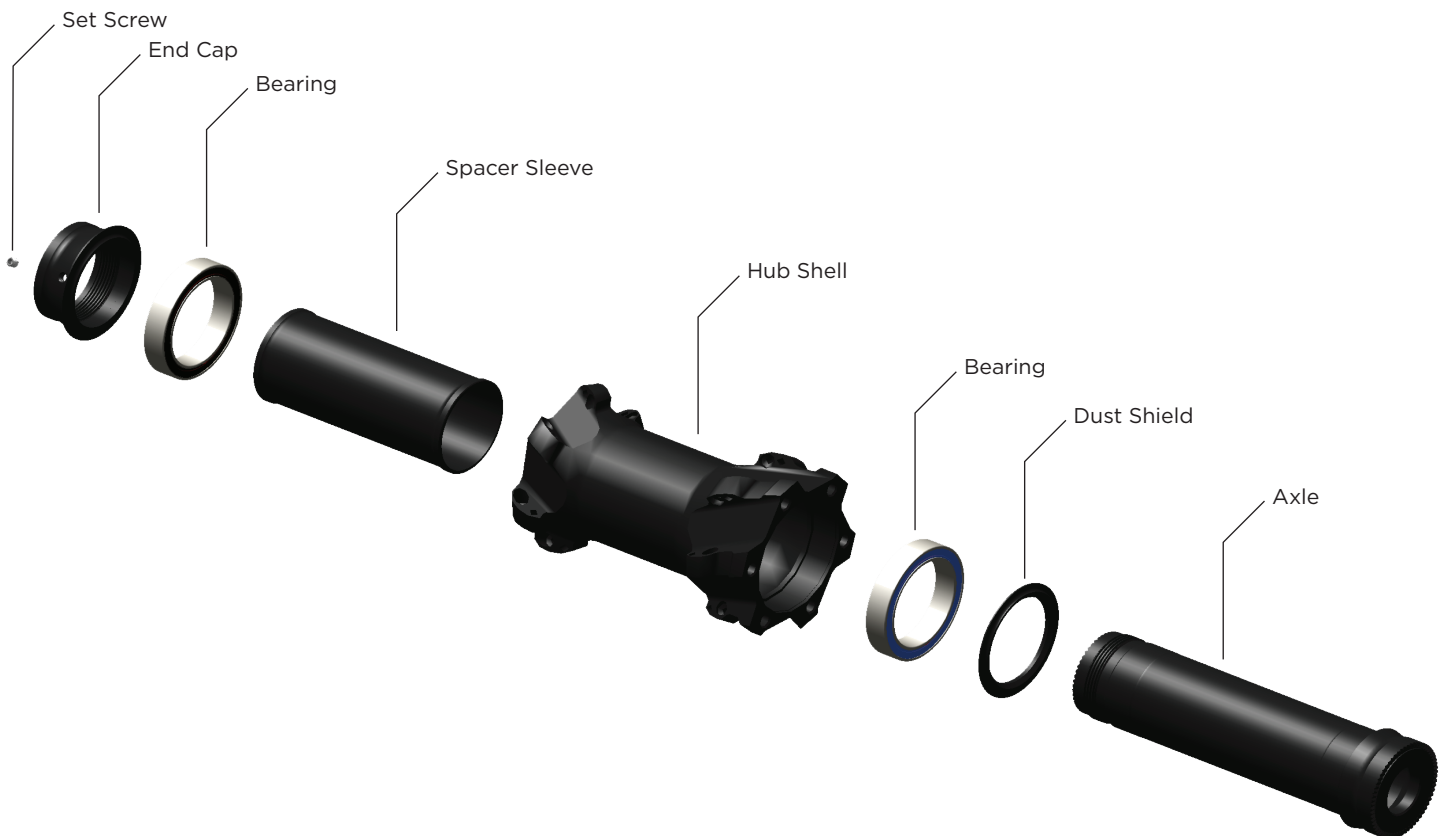


SRAM Bearing Press Tools 275377

SAFETY INSTRUCTIONS

Always wear nitrile gloves when working with bicycle grease.

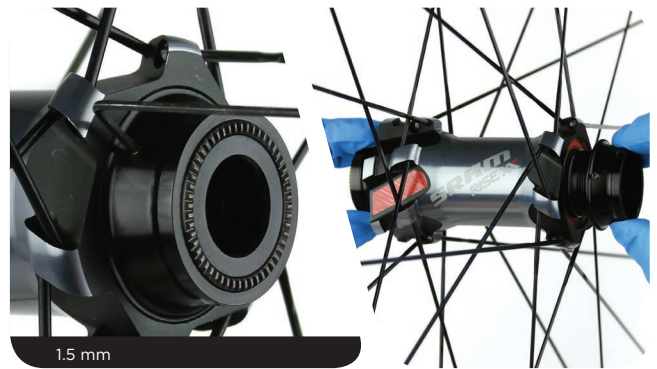
Exploded View



Spacer Sleeve Removal

- 1 Use a 1.5 mm hex wrench to loosen the set screw on the drive side of the hub.

While holding the non-drive side end cap in place, unthread the drive side end cap by hand.



- 2 Remove the axle and dust shield from the non-drive side of the hub.

Remove the dust shield from the axle and clean it with a rag.



- 3 Use your finger to push the spacer sleeve inside the hub to the side to expose the bearing.

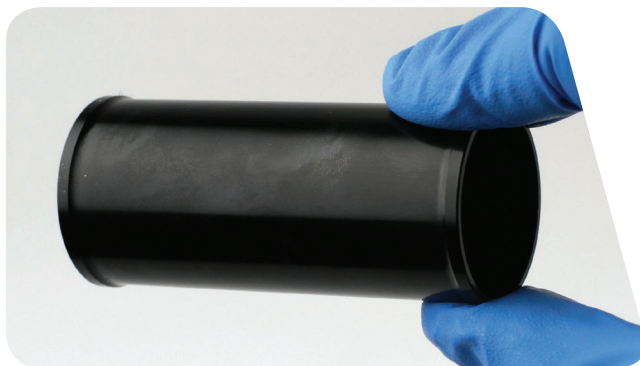


- 4** Insert a punch through non-drive side of the hub, and use a soft faced mallet to tap the punch along the perimeter of the drive side bearing to remove the bearing.

Remove the spacer sleeve and set aside the bearing.

NOTICE

Do not damage the bearing during removal from the hub.



- 5** Clean the bearing bore with a rag.



Hub Assembly

- 1 Apply a thin layer of SRAM® Butter grease to the bearing bore on the drive side of the hub.



- 2 Install the bearing into the drive side of the hub with the colored side facing outward.

NOTICE

Do not install the spacer sleeve into the hub.



- 3 Slide a SRAM 275377 bearing press tool onto the threaded rod of the Wheels Manufacturing Press-1 Sealed Bearing Press tool. Insert the threaded rod of the bearing press through the non-drive side of the hub shell. Slide the second SRAM 275377 bearing press tool onto the threaded rod.

Thread the bearing press handle onto the threaded rod.

Turn the threaded handle clockwise to press the bearing into the hub until it is hand-tight. The bearing should sit approximately 1 mm below the outer edge of the bearing bore.

Do not overtighten the bearing.

Remove the bearing press tool.



NOTICE

To prevent damage to the bearing, make sure that the bearing press tool contacts both the inner and outer races of the bearing.

Applying excessive force while installing the second bearing may result in damage to one or both bearings.

- 4 Install the dust shield onto the axle so that the chamfer is flush with the axle shoulder.

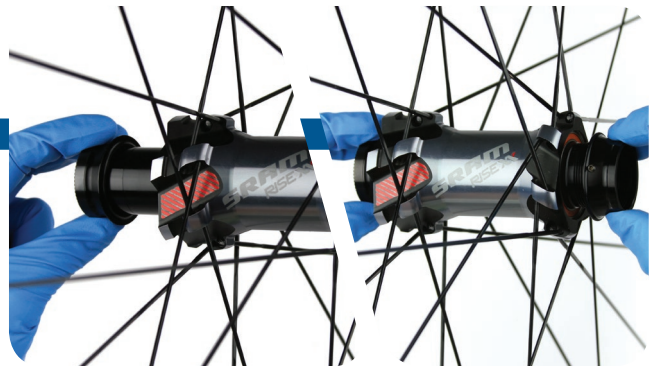


- 5 Install the axle through the non-drive side of the hub and thread the end cap onto the axle. While holding the axle, thread the drive side end cap on until the end cap lightly contacts the bearing. Then tighten the set screw to 0.4 N·m (3.5 in-lb).

NOTICE

Do not over tighten the end cap. Overtightening the end cap will prematurely wear out the bearings.

If there is still play in the hub, loosen the set screw and tighten the end cap slightly more. Then tighten the set screw to 0.4 N·m (3.5 in-lb). Repeat until there is no play in the hub.



SRAM®

“We will revolutionize the relationship that our users have with SRAM products, cultivating a bond between the rider and bicycle. Our technical communication will be delivered in innovative and exciting ways, with deliberation and accuracy that inspires loyalty and trust across the globe.”

-SRAM TechCom Vision Statement



WORLD HEADQUARTERS
SRAM LLC
1333 North Kingsbury, 4th Flr
Chicago, Illinois 60642
USA

ASIAN HEADQUARTERS
SRAM Taiwan
No. 1598-8 Chung Shan Road
Shen Kang Hsiang, Taichung City
Taiwan R.O.C.

EUROPEAN HEADQUARTERS
SRAM Europe
Paasbosweg 14-16
3862ZS Nijkerk
The Netherlands